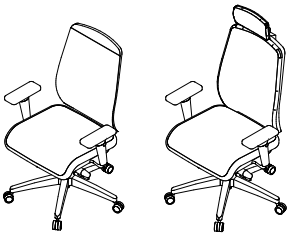




actualize task chair datasheet

Extent of Range

Actualize task chair range with mesh or upholstered back.



Delivery

This range is delivered pre-assembled by the Flexiform installation team, wrapped for protection.

Product Warranty

10 years subject to our standard T&C's. See the Flexiform Standard Warranty document for more information.

Features

Type: Operator/ Task Chair

Frame: Moulded polypropylene frame in black as standard. White frame available with aluminium base as standard.

Back/ Lumbar: Height adjustable mesh back and lumbar support up to 100mm. Extend and retract the lumbar support by up to 10mm. Choice of 3 mesh colours.

Arms: No arms, 2D polypropylene arms with up/down adjustment or 4D arms (up/down adjustment with 180 degrees rotation and arm rests adjust forwards/backwards).

Black finish only.

Seat: Waterfall seat design.

Optional Seat Slide: 50mm of adjustment.

Base: 50star nylon base with 65mm non locking hard castors for carpeted surfaces. Soft castors available on request. Polished aluminium base available.

Mechanisms: Actualize task chair is provided with a synchro-tilt mechanism, this allows simple locking and unlocking of the mechanism to allow the user free movement throughout the day.

Optional Headrest: Height adjustable and rotating upholstered headrest. Fabric finish matches the seat fabric as standard.

Weight Limit: 150kg

Product Environmental Certification



Environmental Manufacturing

Mixture of virgin and recycled materials. Please see materials section for full breakdown of recyclability per component.

Dimensions

Width: 720mm

Depth: 565mm

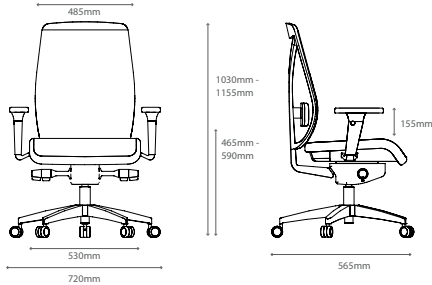
Height range: 1030mm - 1155mm

Seat Height: 465mm - 590mm

Seat Width: 530mm

Back Width: 485mm

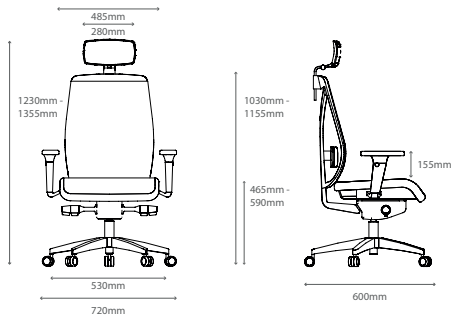
Arm Height from Seat: 155mm



Headrest Width: 280mm

Height range with headrest: 1230mm - 1355mm

Depth: 600mm



Materials

Base, Underseat, Telescopic Bellow,

Lumbar Component: PP - 100% recycled material. 100% recyclability.

Lumbar Cushion: TPU - 100% virgin material. 0% recyclability.

Armrest Component: PAGF- 100% virgin material (0% recyclability)

Armrest Component: TPU - 100% recycled material 100% recyclability.

Lumbar Component: PPGF, PAGF - 100% virgin material. 100% recyclability.

J-Bar Adapter: POM - 100% virgin material. 100% recyclability.

Seat: PPK - 100% recycled material. 100% recyclability.

Castor: PPGF - 100% recycled material. 100% recyclability.

Optional Fabric Seat Pad

Available in a range of fabric brands from group 0 – 8. Choose from Camira and Gabriel fabrics as standard. More brands available upon request.

Base Finishes

Standard Flexiform finishes.



Black base only



Aluminium Base

Plastic Finishes

Standard Flexiform finishes.



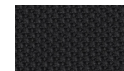
Black Plastic Frame (Standard)
Code: B



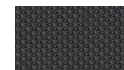
White Plastic Frame (Only available with Aluminium Base. Code: W

Mesh Finishes

Standard Flexiform finishes.



Black Mesh
Code: 01101



Dark Grey Mesh
Code: 02101



Mid Grey Mesh
Code: 03101