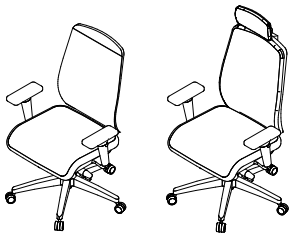


## actualize task chair datasheet

### Extent of Range

Actualize task chair range with mesh or upholstered back.



### Delivery

This range is delivered pre-assembled by the Flexiform installation team, wrapped for protection.

### Product Warranty

10 years subject to our standard T&C's. See the Flexiform Standard Warranty document for more information.

### Features

**Type:** Operator/ Task Chair

**Frame:** Moulded polypropylene frame in black as standard. White frame available with aluminium base as standard.

**Back/ Lumbar:** Height adjustable mesh back and lumbar support up to 100mm. Extend and retract the lumbar support by up to 10mm. Choice of 3 mesh colours.

**Arms:** No arms, 2D polypropylene arms with up/down adjustment or 4D arms (up/down adjustment with 180 degrees rotation and arm rests adjust forwards/backwards). Black finish only.

**Seat:** Waterfall seat design.

**Seat Slide:** 50mm of adjustment.

**Base:** 50star nylon base with 65mm non locking hard castors for carpeted surfaces. Soft castors available on request. Polished aluminium base available.

**Mechanisms:** Actualize task chair is provided with a synchro-tilt mechanism, this allows simple locking and unlocking of the mechanism to allow the user free movement throughout the day.

**Optional Headrest:** Height adjustable and rotating upholstered headrest. Fabric finish matches the seat fabric as standard.

**Weight Limit:** 150kg

### Certification

Tested to: BSEN 5459-2: 2000 + A2: 2008, Part 2, BS EN ISO 9241, 1999, part 5, workstation layout and postural requirements, and BS EN 1335, 2020, part 1, dimensions.

### Product Environmental Certification



### Environmental Manufacturing

Mixture of virgin and recycled materials. Please see materials section for full breakdown of recyclability per component.

flexiform

## Dimensions

Width: 720mm

Depth: 565mm

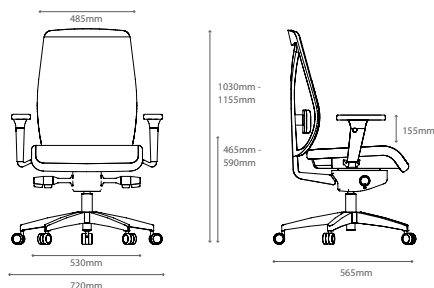
Height range: 1030mm - 1155mm

Seat Height: 465mm - 590mm

Seat Width: 530mm

Back Width: 485mm

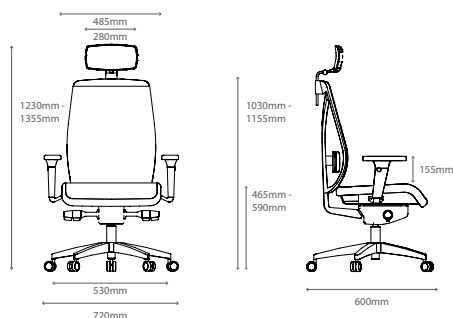
Arm Height from Seat: 155mm



Headrest Width: 280mm

Height range with headrest: 1230mm - 1355mm

Depth: 600mm



## Materials

**Base, Underseat, Telescopic Bellow,**

**Lumbar Component:** PP - 100% recycled material. 100% recyclability.

**Lumbar Cushion:** TPU - 100% virgin material. 0% recyclability.

**Armrest Component:** PAGF- 100% virgin material (0% recyclability)

**Armrest Component:** TPU - 100% recycled material 100% recyclability.

**Lumbar Component:** PPGF, PAGF - 100% virgin material. 100% recyclability.

**J-Bar Adapter:** POM - 100% virgin material. 100% recyclability.

**Seat:** PPK - 100% recycled material. 100% recyclability.

**Castor:** PPGF - 100% recycled material. 100% recyclability.

## Optional Fabric Seat Pad

Available in a range of fabric brands from group 1-5. More brands available upon request.

## Base Finishes

Standard Flexiform finishes.



Black base only



Aluminium Base

## Plastic Finishes

Standard Flexiform finishes.



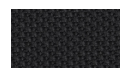
Black Plastic Frame (Standard)  
Code: B



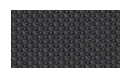
White Plastic Frame (Only available with Aluminium Base. Code: W

## Mesh Finishes

Standard Flexiform finishes.



Black Mesh  
Code: 01101



Dark Grey Mesh  
Code: 02101



Mid Grey Mesh  
Code: 03101

flexiform