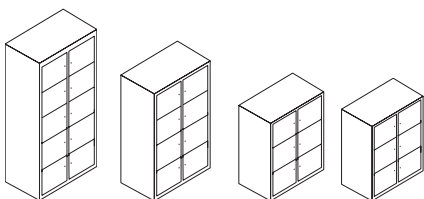




freestor accent lockers datasheet & environmental report

Extent of Range

Freestor Accent Lockers are available in 800mm, 825mm* and 1000mm wide. 6, 8 or 10 locker compartment configurations.



Delivery

This range is delivered pre-assembled by the Flexiform installation team, wrapped for protection.

Product Warranty

15 years subject to our standard T&C's. See the Flexiform Standard Warranty document for more information

Product Certification

BS EN 14073- 2&3: 2004 and BS EN 14074:2004

Features

Type: Multi-tiered lockers.

Carcass: Welded carcass with riveted back. Side panels have ladder track stiffeners for strength and allows additional accessories to be fitted.

Doors: 20SWG Folded assembly with integral stiffener.

Hinges: Supplied as standard with concealed hinges 100° opening. Optional extras are concealed Soft Close Hinges.

Locks: 10 lock options: cam lock, cam lock and name plate, C4 combination locks (black or white housing), coin-op return, coin op - return and deposit lock, mini digital lock, Eco RFID lock, Ronis Tronic Evolution, Ronis RFID Mifare.

Compartment Numbering: 3 digit or 4 digit number plaques on 30mm hole centre punching. Numbers are engraved in black text on white foreground. Please order number plaques as an SPB as separate line on the sales order.

Key Locking Bottom Drawer: 288mm (h) x 400mm (d) x various widths. Replaces bottom lockers.

Labels: Small 29mm x 50mm label or large 55mm x 90mm self adhesive label.

Post Slots: 25mm high slot. 245mm or 305mm wide depending upon unit.

Levelling: Floor levelling feet supplied.

Components: 20swg inner panels incorporate 12.7mm slot centres for shelves or trays.

Components

Adjustable shelf and tray. Hotboxes available.

Dimensions

Heights: 1322mm (6 door locker), 1742mm (8 door locker), 2150mm (10 door locker).

Heights (with MFC top): 1110mm (6 door locker).

Widths: 800mm, *825mm and 1000mm.

Depth: 475mm.

*825mm unit only available on 1110mm high unit as standard.

Materials

MFC Top Panels: 25mm melamine faced chipboard (M.F.C) with 2mm ABS matching edging or contrasting edging. British standard 476 class 1 surface spread of flame. Meets E1 European standards on Formaldehyde emissions.

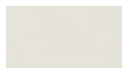
Steel: Powder coated steel with minimum paint coverage thickness of 35 Microns. Indentation, cross cut+adhesion and bend tested.

flexiform

MFC Band 1 Finishes



White 25mm MFC with matching edge. Code: WHM



Grey 25mm MFC with matching edge. Code: MOG



Dust Grey 25mm MFC with matching edge. Code: DGM



Oak 25mm MFC with matching edge. Code: MOK*



Walnut 25mm MFC with matching edge. Code: MOW*



White 25mm MFC with contrasting oak edge. Code: WHO



White 25mm MFC with contrasting black edge. Code: WHB

**Please note, we cannot guarantee continuity of these finishes.*

MFC Band 2 Finishes



Cashmere Grey 25mm MFC with matching edge. Code: MSC



Antique Rose 25mm MFC with matching edge. Code: MAR



Denim Blue 25mm MFC with matching edge. Code: MDB



Reed Green 25mm MFC with matching edge. Code: MRG



Sevilla Ash 25mm MFC with matching edge. Code: MSA



Natural Nebraska Oak 25mm MFC with matching edge. Code: MNO



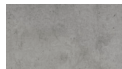
Natural Hamilton Oak 25mm MFC with matching edge. Code: MHO



Truffle Brown Denver Oak 25mm MFC with matching edge. Code: MDO



Natural Carini Walnut 25mm MFC with matching edge. Code: MCW



Light grey Chicago Concrete 25mm MFC with matching edge. Code: MCC

Standard Steel Finishes.



Black. RAL9005. Matt.
Code: BLM



Graphite Grey. RAL7024. Matt
Code: GGM



Silver. RAL9006. Matt
Code: JOM



Pale Grey. RAL7035. Matt
Code: PGM



White. RAL9016. Matt
Code: JWM



Pale Brown. RAL8025. Matt
Code: BPM



Grey Beige. RAL1019. Matt
Code: BGM



Beige. BS10B19. Matt
Code: BBM



Light Ivory. RAL1015. Matt
Code: BIM



Olive Green. RAL6003. Matt
Code: GOM



Fern Green. RAL6025. Matt
Code: GFM



Reed Green. RAL6013. Matt
Code: GRM



Black Green. RAL6012. Matt
Code: GBM



Pine Green. RAL6028. Matt
Code: GPM



Patina Green. RAL6000. Matt
Code: GAM



Pale Green. RAL6021. Matt
Code: GCM

Standard Steel Finishes Continued.



Sapphire Blue. RAL5003. Matt
Code: USM



Violet Blue. RAL5000. Matt
Code: UVM



Distant Blue. RAL5023. Matt
Code: UDM



Pastel Blue. RAL5024. Matt
Code: UPM



Purple Red. RAL3004. Matt
Code: RPM



Red Violet. RAL4002. Matt
Code: RLM



Orient Red. RAL3031. Matt
Code: ROM



Beige Red. RAL3012. Matt
Code: RBM



Tomato Red. RAL3013. Matt
Code: RTM



Salmon Pink. RAL3022. Matt
Code: PSM



Yellow Red. RAL2000. Matt
Code: OYM

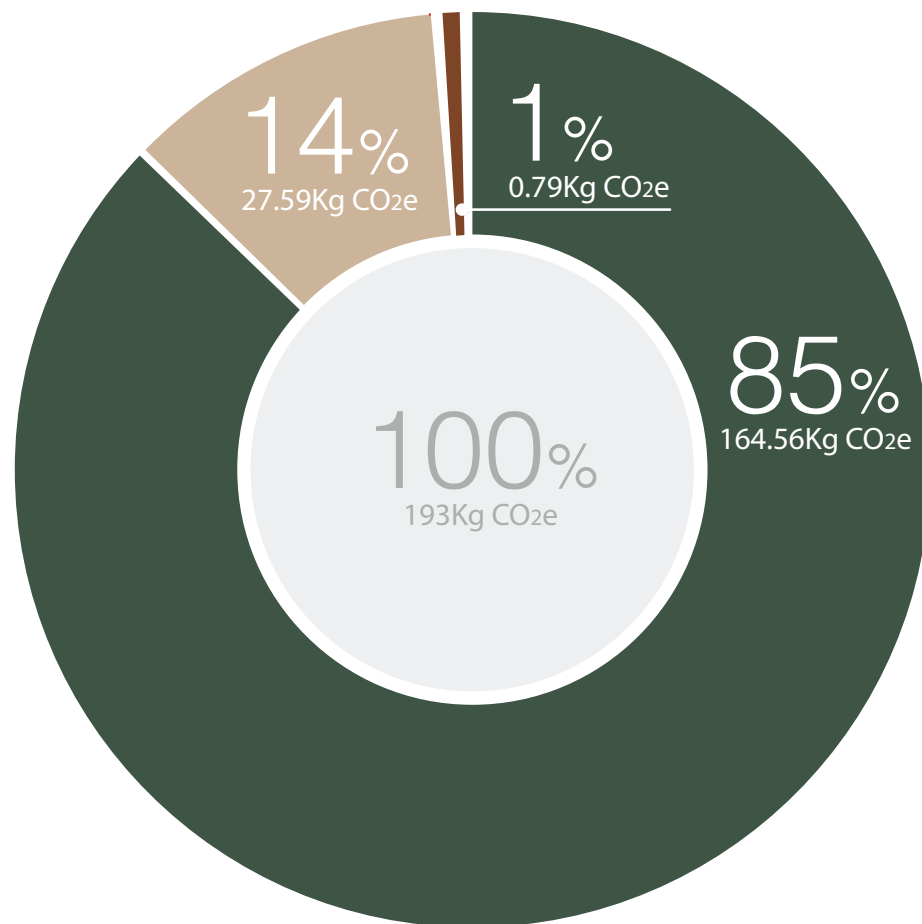


Broom Yellow. RAL1032. Matt
Code: YBM

Product Carbon Footprint

Our carbon footprint data is based on a life cycle assessment on a 8 door Accent Locker Unit. Product weight: 64.9kg. Information extracted from report 'Product Carbon Footprint and Environmental Impact Assessments' prepared by Eco3, 2017.

Carbon Footprint: 193Kg CO₂e.



Product Environmental Certification



Product Recyclable Content

Recycled Content: 34.36%

Recyclable content: 99.83%

Based on weight. 800mm x 475mm x 1332mm Freestor Accent Locker with MFC top. (LKR6AP*** ***)

flexiform