

# PRODUCT CATALOGUE

flexiform







## task

desks, screens, electrics, monitor arms, task chairs



## store

storage and lockers



## meet

boardroom tables, chairs, credenzas, collaborative tables, meeting chairs and pouffes



## social / spaces

sofas, laptop tables, media booths and pods



## quiet working

single high back chair, work booths and telephone booths



## learn

flip-top tables, whiteboards and mobile chairs



## dine

bistro tables, plastic chairs, wooden chairs & stools





task



# desks



## Flexiform Pico Desks

**Type:** Single, side-to-side, back-to-back and 120 degree desk.

**Top Shapes:** Rectangular, single wave, double wave, 120 degree and workstation.

**Size:** 800mm - 1800mm wide x 740mm high

**Leg Style:** Goalpost, rectangular loop & A frame.

**Cable Management:** Central shared cable tray and cable tower with sliding top.

**Extendable:** Yes.

**Power & Data:** Non-Standard.

**Finish:** Full Flexiform MFC and steel range.



## Flexiform Jot-Up Lite

**Type:** Single or back-to-back desk.

**Top Shapes:** Rectangular.

**Size:** 970mm - 1770mm wide x 610mm - 1260mm high.

**Leg Style:** Electric height adjustable lifting columns, height settable or fixed height. Single foot.

**Cable Management:** Rear cable tray.

**Extendable:** No.

**Power & Data:** Yes, electrical adjustment.

**Steel Finish:** Full Flexiform MFC & White or silver steel.



## Flexiform Jot-Up Desks

**Type:** Single, side-to-side or back-to-back.

**Top Shapes:** Rectangular.

**Size:** 970mm - 1770mm wide x 610mm - 1260mm high.

**Leg Style:** Electric height adjustable lifting columns, height settable or fixed height. Cable management foot.

**Cable Management:** Central cable tray with protective cable snakes leading up to independent rear cable trays.

**Extendable:** No.

**Power & Data:** Yes, electrical adjustment.

**Steel Finish:** Full Flexiform MFC & White or silver steel.



## Flexiform A-Up Desks

**Type:** Single or back-to-back desk.

**Top Shapes:** Rectangular.

**Size:** 970mm - 1770mm wide x 610mm - 1260mm high.

**Leg Style:** Electric height adjustable lifting columns

**Cable Management:** Rear drop down cable tray.

**Extendable:** No.

**Power & Data:** Yes, electrical adjustment.

**Steel Finish:** White only



## Flexiform Todd Desks

**Type:** Single standalone desk.

**Top Shapes:** Rectangular.

**Size:** 800mm - 1800mm wide x 730mm high

**Leg Style:** Cantilever.

**Cable Management:** Leg cable management with rear cable tray and on-top cable ports.

**Extendable:** Yes.

**Power & Data:** Non-Standard.

**Finish:** Full Flexiform MFC and steel range.

**Accessories:** Screens, on-desk electrics, monitor arms and CPU holder.



## Flexiform Ferro Desks

**Type:** Single & back-to-back desk.

**Top Shapes:** Rectangular.

**Size:** 800mm - 1800mm wide x 740mm high

**Leg Style:** Goalpost and rectangular loop leg.

**Cable Management:** Central shared cable tray and cable tower with sliding top.

**Extendable:** Yes.

**Power & Data:** Non-Standard.

**Finish:** Ferro clear coat lacquer leg with 25mm Nebraska Oak or Jackson Pine top.



# desks



**Flexiform Folding Homeworker Desk**

**Type:** Single folding desk.

**Top Shapes:** Rectangular.

**Size:** (WxDxH): 1000mm 600mm x 740mm

**Leg Style:** X

**Cable Management:** None.

**Extendable:** No.

**Power & Data:** Non-Standard.

**Finish:** Graphite legs, white top with wood edging.



**Flexiform Panel Folding Homeworker Desk**

**Type:** Single folding desk.

**Top Shapes:** Rectangular.

**Size:** (WxDxH) 1000mm/ 1200mm x 600mm x 720mm

**Leg Style:** Wood panel

**Cable Management:** None.

**Extendable:** No.

**Power & Data:** Non-Standard.

**Steel Finish:** White MFC



**Flexiform Picola Homeworker Desk**

**Type:** Single desk.

**Top Shapes:** Rectangular.

**Size:** (WxDxH) 1000mm or 1170mm x 600mm x 740mm

**Leg Style:** 4 legs

**Cable Management:** None.

**Extendable:** No.

**Power & Data:** Non-Standard.

**Steel Finish:** White MFC and white steel.



**Dolly Screens**

**Type:** Desk mounted and freestanding.

**Toolrail:** Not available.

**Panel:** Fabric.

**Thickness:** 28mm.

**Shape:** Rectangle with 50mm or 100mm radius corners.

**Frame colour:** N/a.



**Flexiform Fyn Screen**

**Type:** Desk mounted.

**Toolrail:** N/a.

**Panel:** Fabric.

**Thickness:** 40mm.

**Shape:** Rectangle.

**Frame colour:** Silver as standard.



**Border Screen**

**Type:** Desk mounted and freestanding.

**Toolrail:** One.

**Panel:** Fabric.

**Thickness:** 30mm.

**Shape:** Rectangle.

**Frame colour:** Silver or white.





## Elite Under Desk Electrics

**Power Module Type:** Under desk electrics.

**Amp:** 3.15A or 5A.

**Sockets:** 2x, 3x, 4x or 6x power.

**Data:** Optional 2x RJ45 Cat6 data sockets. with 3m, 5m or 7m data leads, 2x or 4x data compartment (empty).

**Colour Finish:** Black.

**Connection:** Male and female 3 pole connector output.

**Features:** Switched or non switched.

*Cables: Connecting cables available on all products*



## Contour On Desk Electrics

**Power Module Type:** On-desk electrics.

**Amp:** 3.15A or 5A.

**Sockets:** 1x, 2x or 4x power.

**Data:** Optional 2x RJ45 data Cat6, 1x twin port 5amp USB charger .

**Colour Finish:** Black, white or grey.

**Connection:** 1m mains lead to 3 pole connector.

**Features:** N/a.

**Variations:** Media sockets available on request (HDMI, display ports, VGA etc...).



## Harmony On Desk Electrics

**Power Module Type:** On-desk electrics.

**Amp:** 3.15A or 5A.

**Sockets:** 1x, 2x or 4x power.

**Data:** Optional 2x RJ45 data Cat6, 1x twin port 5amp USB charger.

**Colour Finish:** Black, white or grey with anodised aluminium extruded body.

**Connection:** 1m mains lead to 3 pole connector.

**Features:** N/a.

**Variations:** N/a.



## Surface In Desk Electrics

**Power Module Type:** In-desk electrics.

**Amp:** 3.15A or 5A.

**Sizes:** 69mm deep x 163mm - 463mm depending upon module selected.

**Sockets:** 1x, 2x or 4x power.

**Data:** Optional 1 or 2x RJ45 data Cat6, 1x VGA, 1x mini jack, 1x USB, 1x HDMI or 1x twin port 5amp USB charger.

**Colour Finish:** Black, white or grey with matching trim or stainless steel frame.

**Connection:** 1m mains lead to 3 pole connector.



## Affinity In Desk Electrics

**Power Module Type:** In-desk electrics.

**Amp:** 3.15A or 5A.

**Sizes:** 132mm deep x 161.5mm - 374.0mm depending upon module selected.

**Sockets:** 2x or 4x power.

**Data:** Optional 2x RJ45 data Cat6, 1x VGA, 1x mini jack, 1x HDMI or 1x twin port 5amp USB charger and 3m data leads.

**Colour Finish:** Grey fascia & anodised silver.

**Connection:** 3m mains lead to 13A UK plug.

**Features:** Lift-up lid to access electrics.

**Variations:** N/a.



## Porthole In Desk Electrics

**Power Module Type:** In-desk electrics.

**Amp:** 3.15A or 5A.

**Sizes:** 80mm grommet hole.

**Sockets:** Max 1 UK power socket.

**Data:** 2 port 4A USB charger.

**Colour Finish:** Black, white or grey.

**Connection:** 1m mains lead to 3-pole connector.

**Features:** Designed to deflect spillages.

**Variations:** Similar module available with chrome trim, HDMI, 3.5mm audio mini jack and USB data transfer.



# monitor arms



## Reach Monitor Arm

**Arms:** Single or double arm.

**Reach:** 498mm.

**Height range:** 188mm - 440mm.

**Movement:** Spring assisted.

**Monitors:** Supports between 2Kg - 5Kg or 3Kg - 8Kg with HD version.

**VESA:** 75mm & 100mm.

**Cable Management:** Integrated in arm.

**Connections:** C-clamp, through desk and grommet hole fixing.

**Swivel Movement:** 180 degree lockout opt.

**Finish:** Silver, black or white.



## Vision Monitor Arm

**Arms:** Single or double arm.

**Reach:** 460mm.

**Height range:** 330mm.

**Movement:** Height adjustment lever.

**Monitors:** Supports up to 6Kg per arm.

**VESA:** 75mm & 100mm.

**Cable Management:** Integrated in arm.

**Connections:** C-clamp, through desk and grommet hole fixing.

**Swivel Movement:** 360 degree.

**Finish:** Silver, black or white.



## Flo Monitor Arm

**Arms:** Single or double arm.

**Reach:** 458mm.

**Height range:** 341mm.

**Movement:** Spring assisted.

**Monitors:** Supports up to 3Kg - 9Kg.

**VESA:** 75mm & 100mm.

**Cable Management:** Integrated in arm.

**Connections:** C-clamp, through desk and grommet hole fixing.

**Swivel Movement:** 180 /360 degree.

**Finish:** Silver, black or white.



## M2 Monitor Arm

**Arms:** Single arm.

**Reach:** 510mm.

**Height range:** 255mm.

**Movement:** Spring assisted.

**Monitors:** Supports between 1.8Kg - 9Kg.

**VESA:** 75mm & 100mm.

**Cable Management:** Integrated in arm.

**Connections:** C-clamp, through desk and grommet hole fixing.

**Swivel Movement:** 180 degree lockout.

**Finish:** Silver, black or white.



## M8 Monitor Arm

**Arms:** Single or double arm.

**Reach:** 510mm.

**Height range:** 290mm.

**Movement:** Spring assisted.

**Monitors:** Supports between 3.5Kg - 18Kg.

**VESA:** 75mm & 100mm.

**Cable Management:** Integrated in arm.

**Connections:** C-clamp, through desk and grommet hole fixing.

**Swivel Movement:** 180 degree lockout.

**Finish:** Silver, black or white.







#### Do Chair Range

**Back/ Seat:** Black technical mesh, sheer mesh or grey uph. mesh with uph. seat.  
**Arms:** No arms, adjustable arms, multi-adjustable arms or width adjustable arms.  
**Base:** Black or polished.  
**Castor:** Soft or hard castor, 50mm or 65mm.  
**Seat Slide:** 60mm.  
**Adjustable Lumbar:** 100mm as standard.  
**Back Mechanism:** Weight tension.  
**Headrest:** Available.  
**Finishes:** Back plate, uph. plate & arms.  
**Additional Features:** Travel limiter.



#### Eva Chair Range

**Back/ Seat:** Mesh with uph. seat.  
**Arms:** No arms or adjustable arms.  
**Base:** Black, white, aluminium or polished.  
**Castor:** 65mm soft or hard castor.  
**Seat Slide:** 60mm.  
**Adjustable Lumbar:** Available.  
**Back Mechanism:** Weight tension.  
**Headrest:** Available.  
**Finishes:** Trim, mesh and base.



#### Ara Chair Range

**Back/ Seat:** Elastomer or black mesh back with upholstered seat.  
**Arms:** No arms, adjustable arms, multi-functional arms or width adjustable arms.  
**Base:** Black or painted & polished aluminium.  
**Castor:** 65mm soft or hard castor.  
**Seat Slide:** 60mm.  
**Adjustable Lumbar:** Various available.  
**Back Mechanism:** Weight tension.  
**Headrest:** Not available.  
**Finishes:** Yoke, back plastic and base.



#### Vite Chair Range

**Back/ Seat:** Mesh with uph. seat.  
**Arms:** Black height adj. arms or polished aluminium multi-arms.  
**Base:** Black or polished aluminium.  
**Castor:** Soft or hard castors.  
**Seat Slide:** 70mm seat slide.  
**Adjustable Lumbar:** Not available.  
**Back Mechanism:** Synchro mechanism or height adjustment mechanism.  
**Headrest:** Not available.  
**Finishes:** Mesh colour and base.  
**Additional Features:** 3° forward seat tilt.



#### Felix Chair Range

**Back/ Seat:** Mesh with uph. seat.  
**Arms:** Fixed arms, black height adj. arms, black or polished multi-functional arms.  
**Base:** Black or polished aluminium.  
**Castor:** 60mm black castors.  
**Seat Slide:** 70mm seat slide.  
**Adjustable Lumbar:** Not available.  
**Back Mechanism:** Intuitive synchronised or weight adjusted mechanism.  
**Headrest:** Available.  
**Finishes:** Mesh colour and base.  
**Additional Features:** 3° forward seat tilt.



#### App Chair Range

**Back/ Seat:** Mesh or uph. with uph. seat.  
**Arms:** Fixed arms, black height adj. arms, black or polished multi-functional arms.  
**Base:** Black or polished aluminium.  
**Castor:** 60mm black castors.  
**Seat Slide:** 65mm seat slide.  
**Adjustable Lumbar:** 70mm.  
**Back Mechanism:** Intuitive synchronised.  
**Headrest:** N/a.  
**Finishes:** Arms and base.  
**Additional Features:** Matching visitor chair.

# task chairs



## Kind Chair Range

**Back/ Seat:** Mesh back with uph. seat.  
**Arms:** No arms, fixed arms, 2D or 3D height & depth adj. arms.  
**Base:** Black, silver or polished base.  
**Castor:** 6cm Soft brake un/loading castors.  
**Seat Slide:** Available.  
**Adjustable Lumbar:** Adjustable as standard.  
**Back Mechanism:** Body weight responsive.  
**Headrest:** Adjustable headrest available.  
**Finishes:** Mesh colour, base and back.



## Flexiform Equity Task Chair Range

**Back/ Seat:** Mesh back with uph. seat.  
**Arms:** No arms, 2D or 4D black arms.  
**Frame:** Black or white frame.  
**Base:** Black or aluminium base.  
**Castor:** 60mm hard castors.  
**Adjustable Lumbar:** 100mm adjustable lumbar.  
**Back Mechanism:** Body weight responsive with 60mm seat slide adjustment.  
**Headrest:** PU headrest available.  
**Finishes:** 3 mesh finishes from Gabriel Web including black, mid grey and dark grey.



## Flexiform Actualize Task Chair Range

**Back/ Seat:** Mesh back with uph. seat.  
**Arms:** 2D black arms.  
**Frame:** Black or white\* frame.  
**Base:** Black or aluminium base.  
**Castor:** 60mm hard castors.  
**Adjustable Lumbar:** 100mm adjustable lumbar.  
**Back Mechanism:** Body weight responsive with 50mm seat slide adjustment.  
**Headrest:** Upholstered headrest available.  
**Finishes:** 3 mesh finishes from Gabriel Web including black, mid grey and dark grey.



## Trinetic Chair Range

**Back/ Seat:** Mesh back with mesh or upholstered seat.  
**Arms:** Fixed arms.  
**Base:** 4 or 5 star base, black or polished.  
**Castor:** Black or silver castors to match base.  
**Seat Slide:** N/a.  
**Adjustable Lumbar:** N/a.  
**Back Mechanism:** Dynamic support without manual user adjustments.  
**Headrest:** Not available.  
**Finishes:** Base, arm pads and mesh colour.



## Liberty Chair Range

**Back/ Seat:** Form-sensing mesh with upholstered foam or gel seat.  
**Arms:** Fixed arms or height adjustable.  
**Base:** Black, painted or polished.  
**Castor:** 3inch dual-surface castors.  
**Seat Slide:** N/a.  
**Adjustable Lumbar:** Automatic support.  
**Back Mechanism:** Dynamic support without manual user adjustments.  
**Headrest:** Not available.  
**Finishes:** Frame, mesh colour.



## Moneypenny Chair Range

**Back/ Seat:** Mesh back with uph. seat.  
**Arms:** Adjustable arms.  
**Base:** Black or polished aluminium base.  
**Castor:** Black.  
**Seat Slide:** 100mm.  
**Adjustable Lumbar:** 75mm adjustable lumbar.  
**Back Mechanism:** 11 locking positions.  
**Headrest:** Yes.  
**Finishes:** Mesh colour.  
**Additional Features:** Side tension adj.





**Flexiform Equity Task Chair Range**

**Back/ Seat:** Uph. back with uph. seat.

**Arms:** No arms, 2D or 4D black arms.

**Frame:** Black or white frame.

**Base:** Black or aluminium base.

**Castor:** 60mm hard castors.

**Adjustable Lumbar:** 100mm adjustable lumbar.

**Back Mechanism:** Body weight responsive.

**Headrest:** PU headrest available.

**Finishes:** Fabric bands 1-5 & L.



**Flexiform Actualize Task Chair Range**

**Back/ Seat:** Uph. back with uph. seat.

**Arms:** No arms, 2D or 4D arms.

**Frame:** Black or white frame.

**Base:** Black or aluminium base.

**Castor:** 60mm hard castors.

**Back Mechanism:** Body weight responsive with 50mm seat slide adjustment.

**Headrest:** Upholstered headrest available.

**Finishes:** Fabric bands 1-5 & L.

*\*White frame with aluminium base only*



**Being Me Range**

**Back/ Seat:** Upholstered seat and back.

**Arms:** Multi-adj. arms with or without width adjustment.

**Base:** Black.

**Castor:** 60mm or 65mm soft or hard, black.

**Seat Slide:** Standard.

**Adjustable Lumbar:** Air cell lumbar support.

**Back Mechanism:** Synchronous mechanism with seat angle adjustment.

**Headrest:** Fabric.

**Fabric:** Comfort or two tone fabric.



**Being Us Range**

**Back/ Seat:** Upholstered seat and back.

**Arms:** Multi-adj. arms with or without width adjustment.

**Base:** Black.

**Castor:** 60mm or 65mm soft or hard, black.

**Seat Slide:** Standard.

**Adjustable Lumbar:** Optional air cell lumbar.

**Back Mechanism:** Mechanism with Travel Limiter and Comfort Regulator.

**Headrest:** Fabric.

**Fabric:** Comfort or two tone.



**Allow Me Range**

**Back/ Seat:** Upholstered seat and back.

**Arms:** Standard fixed arms with optional armpads.

**Base:** aluminium 4 star base or black or light grey nylon 5 star base.

**Castor:** 65mm black castor.

**Finishes:** black, dark grey or light grey trim.



**Freedom Chair**

**Back/ Seat:** Upholstered seat and back.

**Arms:** Synchronous arms.

**Base:** Aluminium

**Castor:** Black.

**Back Mechanism:** Weight-sensitive, self-locking recline mechanism with 20 degrees of movement. Automatically pivoting backrest with seven-degree back tilt

**Headrest:** Available.

# task chairs



## App Chair Range

**Back/ Seat:** Upholstered, mesh or upholstered/plastic back with uph. seat.  
**Arms:** No arms, fixed arms, height adj. arms, black or polished multifunctional arms.  
**Base:** Black or polished aluminium.  
**Castor:** Black.  
**Seat Slide:** 65mm.  
**Adjustable Lumbar:** 70mm (mesh back only).  
**Back Mechanism:** Intuitive synchronised.  
**Headrest:** Not available.  
**Finishes:** Arms, base.  
**Additional Features:** Max weight 150kg.



## Lily Chair Range

**Back/ Seat:** Upholstered, mesh or upholstered/plastic back with uph. seat.  
**Arms:** Black or polished aluminium adjustment arms, width adjustment available.  
**Base:** Black or polished aluminium.  
**Castor:** 65mm black castors.  
**Seat Slide:** 55mm.  
**Adjustable Lumbar:** Not available.  
**Back Mechanism:** Synchronised.  
**Headrest:** Not available.  
**Finishes:** Arms, base, mesh back colour.  
**Additional Features:** Max weight 150kg.



## Seren Chair Range

**Back/ Seat:** Upholstered seat and back.  
**Arms:** Adj. arms, multi-adj. arms or width adj. with arm pad to match yoke finish.  
**Base:** Black or polished aluminium.  
**Castor:** 50mm or 65mm soft or hard, black  
**Seat Slide:** Not available.  
**Adjustable Lumbar:** Available - inflatable.  
**Back Mechanism:** Optional travel limiter and back lock.  
**Headrest:** Black only, height and depth adj.  
**Finishes:** Yoke (black or white), base, arms.  
**Additional Features:** Two tone fabric.



## Topaz Lite Chair Range

**Back/ Seat:** Medium or high upholstered/ plastic back with upholstered seat.  
**Arms:** No arms, adjustable arms, depth adjustable, foldaway height adjustable arms.  
**Base:** Black, silver or polished base.  
**Castor:** 6cm Soft brake un/loading castors.  
**Seat Slide:** Available.  
**Adjustable Lumbar:** Available - inflatable.  
**Back Mechanism:** Back rake, independent mechanism or synchronised.  
**Headrest:** Not available.  
**Finishes:** Base.



## May'b Chair Range

**Back/ Seat:** Upholstered/ plastic back with upholstered seat.  
**Arms:** No arms, adjustable arms, depth adjustable, foldaway height adjustable arms.  
**Base:** Black, silver or polished base.  
**Castor:** 6cm Soft brake un/loading castors.  
**Seat Slide:** Available.  
**Adjustable Lumbar:** Available - inflatable.  
**Back Mechanism:** Back rake, independent mechanism or synchronised.  
**Headrest:** Not available.  
**Finishes:** Base.



## Dot Chair Range

**Back/ Seat:** Upholstered medium, high or extra high back with upholstered seat.  
**Arms:** No arms, fixed arms, height adj. arms, retractable arms or multi-functional arms.  
**Base:** Black.  
**Castor:** Black.  
**Seat Slide:** Available.  
**Adjustable Lumbar:** Available - inflatable.  
**Back Mechanism:** Optional concealed adj. ratchet.  
**Headrest:** Not available.  
**Finishes:** Fabric only.



# store



# storage



## Flexiform Freestor Accent Locker

**Type:** 6, 8 or 10 door locker.

**Height range:** 1110mm, 1322mm, 1742mm, 2150mm.

**Widths:** 800mm, 825mm, 1000mm.

**Components:** Shelves, letter trays.

**Finishes:** Full Flexiform range with contrasting doors.

**Lock:** Individually locking.

**Planters:** Compatible.

**Optional Features:** 8 lock options, bottom drawer, post slots, soft close hinges, label holders.



## Flexiform Metal Lockers

**Type:** 1, 2, 3 or 4 ventilated door metal locker.

**Height:** 1800mm.

**Widths/Depths:** 300mm, 400mm.

**Components:** Hooks, shelves.

**Finishes:** Full Flexiform range or anti-bacterial finish.

**Lock:** Individual locking.

**Planters:** N/a.



## Flexiform Luxo Lockers

**Type:** Multi-door locker.

**Height:** 1317mm or 1742mm.

**Widths/Depths:** 800mm x 475mm.

**Components:** Hooks, shelves.

**Finishes:** Steel, MFC, BioCarbon, Fenix or Trespa laminate

**Lock:** Individual locking.

**Planters:** N/a.



## Flexiform Pedestals

**Type:** Drawer desk personal storage.

**Height range:** 470mm, 600mm, 640mm, 720mm and 740mm.

**Drawer:** Shallow drawer or filing drawer.

**Widths:** 300mm, 400mm.

**Components:** Pen trays, dividers

**Finishes:** Full Flexiform range.

**Lock:** Central locking

**Planters:** N/a.



## Kontrax

**Type:** 2, 3 or 4 drawer filing.

**Height range:** 711mm, 1009mm or 1320mm.

**Drawer:** Filing drawer.

**Width:** 458mm.

**Components:** N/a.

**Finishes:** 6 standard colours.

**Lock:** Central locking.

**Planters:** N/a.



## Flexiform Recycling Bins

**Type:** Laser cut single door recycling unit.

**Height range:** 1050mm.

**Bin:** Removable perforated bin.

**Width:** 390mm.

**Components:** N/a.

**Finishes:** Full Flexiform range.

**Lock:** Central locking.

**Planters:** N/a.





**Flexiform Freestor Hinged Door**

**Type:** Double door storage unit.

**Height range:** 720mm - 2007mm.

**Widths:** 800mm, 825mm, 1000mm.

**Components:** Plain shelf, slotted shelf, pigeon hole, lateral plain shelf & fixed suspension rail, lateral suspended filing rails, coat rails.

**Finishes:** Full Flexiform range.

**Lock:** Central locking.

**Planters:** Compatible.



**Flexiform Freestor Side Filer**

**Type:** 2, 3 or 4 drawer filing unit.

**Height range:** 720mm, 740mm, 1017mm or 1322mm.

**Widths:** 800mm, 1000mm.

**Components:** Front-to-back filing or side-to-side filing rail.

**Finishes:** Full Flexiform range.

**Lock:** Central locking.

**Planters:** Compatible .



**Flexiform Freestor Combination**

**Type:** Drawer filing unit with hinged door or flipper compartments.

**Height range:** 1677mm, 2007mm.

**Widths:** 800mm, 1000mm.

**Components:** Plain shelf, slotted shelf, pigeon hole, lateral plain shelf & fixed suspension rail, lateral suspended filing rails, front-to-back filing or side-to-side filing rail.

**Finishes:** Full Flexiform range.

**Lock:** Central locking.

**Planters:** N/a.



**Flexiform Freestor Tambour**

**Type:** Double plastic roller door storage.

**Height range:** 695mm - 2007mm.

**Widths:** 800mm, 825mm, 1000mm.

**Components:** Plain shelf, slotted shelf, pigeon hole, lateral plain shelf & fixed suspension rail, lateral suspended filing rails, coat rails, pull out shelf, pull out filing frame, long rail A4 suspended, drawers.

**Finishes:** Full Flexiform range.

**Lock:** Central locking.

**Planters:** Compatible.



**Flexiform Freestor Acoustic Tambour**

**Type:** Double plastic perforated sound absorbing roller door storage.

**Height range:** 1110mm - 2007mm.

**Widths:** 800mm, 825mm, 1000mm.

**Components:** Plain shelf, slotted shelf, pigeon hole, lateral plain shelf & fixed suspension rail, lateral suspended filing rails, coat rails, pull out shelf, pull out filing frame, long rail A4 suspended, drawers.

**Finishes:** Full Flexiform range.

**Lock:** Central locking.

**Planters:** Compatible.



**Flexilink**

**Type:** Double door storage unit.

**Height range:** 720mm - 1912mm.

**Widths:** 800mm, 1000mm.

**Components:** Plain shelf, slotted shelf, pigeon hole, lateral plain shelf & fixed suspension rail, lateral suspended filing rails, coat rails.

**Finishes:** Full Flexiform range.

**Lock:** Central locking.

**Planters:** Compatible.



## Flexiform Jot Hinged Door

**Type:** Double door storage unit.

**Height range:** 720mm - 1912mm.

**Widths:** 800mm, 1000mm.

**Components:** Plain shelf, slotted shelf, pigeon hole, lateral plain shelf & fixed suspension rail, lateral suspended filing rails, coat rails.

**Finishes:** Full Flexiform range.

**Lock:** Central locking.

**Planters:** Compatible.



## Flexiform Jot Side Filer

**Type:** Multiple depth drawer filing unit with 6inch, 9inch, 12inch or 15inch drawers.

**Height range:** 720mm, 740mm, 997mm, 1073mm, 1302mm, 1607mm.

**Widths:** 800mm, 1000mm.

**Components:** Front-to-back filing or side-to-side filing rail.

**Finishes:** Full Flexiform range.

**Lock:** Central or individually locking

**Planters:** Compatible.



## Flexiform Jot Combination

**Type:** Drawer filing unit with hinged door or flipper compartments.

**Height range:** 1302mm, 1607mm, 1912mm.

**Widths:** 800mm, 1000mm.

**Components:** Plain shelf, slotted shelf, pigeon hole, lateral plain shelf & fixed suspension rail, lateral suspended filing rails, front-to-back filing or side-to-side filing rail.

**Finishes:** Full Flexiform range.

**Lock:** Central or individually locking.

**Planters:** N/a.



## Credenza

**Type:** Double door storage unit.

**Height range:** 720mm - 1912mm.

**Widths:** 800mm, 1000mm.

**Components:** Plain shelf, slotted shelf, pigeon hole, lateral plain shelf & fixed suspension rail, lateral suspended filing rails, coat rails.

**Finishes:** Full Flexiform range.

**Lock:** Central locking.

**Planters:** Compatible.



## Ferro Credenza

**Type:** Multiple depth drawer filing unit with 6inch, 9inch, 12inch or 15inch drawers.

**Height range:** 720mm, 740mm, 997mm, 1073mm, 1302mm, 1607mm.

**Widths:** 800mm, 1000mm.

**Components:** Front-to-back filing or side-to-side filing rail.

**Finishes:** Full Flexiform range.

**Lock:** Central or individually locking

**Planters:** Compatible.



## Ferro Storage

**Type:** Drawer filing unit with hinged door or flipper compartments.

**Height range:** 1302mm, 1607mm, 1912mm.

**Widths:** 800mm, 1000mm.

**Components:** Plain shelf, slotted shelf, pigeon hole, lateral plain shelf & fixed suspension rail, lateral suspended filing rails, front-to-back filing or side-to-side filing rail.

**Finishes:** Full Flexiform range.

**Lock:** Central or individually locking.

**Planters:** N/a.



meet/  
collaborate



# boardroom tables



**Flexiform Additions 2 Tables**

Various shape meeting and boardroom tables with choice of 4 legs, power, data and cable management.



**Lano Table**

MFC, laminate, Fenix NTM® or veneer table with polished legs with power, data and cable management.



**Deploy Table**

MFC, MFMDf, veneer, lino, FENIX NTM® with polished legs, power and data.



**Pars Table**

4 leg pars table with power and data, various shape tops and choice of melamine, laminate or veneer.



**Pars Table**

I frame pars table with power and data, various shape tops and choice of melamine, laminate or veneer.



**Pegasus Tables**

Polished aluminium legs with cable management with choice of MFC, MFMDf, veneer, linoleum tops.



**Ambus Table**

Various shape meeting and boardroom table with MFC, veneer or PerfectSense finishes. Various metal and wood bases.



**Aerofoil Table**

Fully cable managed traditional table with bull nose profile, 40mm thick oak, cherry or maple veneer with staining options.



**Flexiform Wilson Table**

Various shape meeting and boardroom table with MFC top and hand-spun solid oak legs.

# boardroom chairs



## Pro Chair Range

Upholstered chair with 4 star swivel or cantilever base. Self-arms.



## Delphi Chair Range

Upholstered chair with cantilever frame. Stackable. Arms or no arms, tilt mechanism. High or low back options.



## Calder Chair Range

Upholstered chair with medium or high back. 4 star or cantilever base. Chrome base. Arms.



## Tokyo Chair Range

Upholstered chair with polished aluminium 4 star base. Optional quilted stitch detail.



## Parker IV Chair Range

Upholstered chair on 4 star, cantilever or sled base. Polished frame. Optional tilting action.



## Trinetic Chair Range

Mesh chair with polished aluminium base. No arms or arms with 3 independent pivot points.



## Kara Chair Range

Mesh chair with polished aluminium base. No arms or arms, black mesh and tilting action.



## Catifa Up Chair Range

Fully upholstered chair with 5 star chrome base. Arms or no arms.



## Key Chair Range

Upholstered chair with full or half back. Self arms with aluminium 4 star, cantilever or 4 leg base. Optional gas lift.







# boardroom storage



## Flexiform Credenza

Steel credenza with MFC or laminate top, soft close hinges, shelves, push-to-open mechanism and 2 leg styles.



## Flexiform Ferro Credenza

Ferro steel credenza with textured laminate top, doors, drawers and features a goose-neck handle and 2 leg styles.



## Wire Credenza

Wire leg credenza with veneer, laminate, Fenix NTM® finish options. 3 widths and 3 heights available.



## Plinth Credenza

Plinth credenza with veneer, laminate, Fenix NTM® finish options. 3 widths and 3 heights available.



## Pars Credenza

2, 3 or 4 door credenza with sled foot or plinth available in laminate, MFC, Fenix NTM®. Fridge and ventilation available.



## Vari Credenza

2, 3 or 4 door credenza with foot or plinth available in laminate, MFC, Fenix NTM®. Fridge and ventilation available.



## Wooden Credenza

MFC or veneer credenza with optional fridge and traditional handles.



## Theo Credenza

Oak or ash veneer credenza with optional fridge and option of doors and drawers.



## Alto Credenza

2, 3 or 4 door credenza with lacquer, Fenix NTM® and veneer finish. Polished hoop base.















# meeting/work tables



**Flexiform Channel Work Table - Wire Leg**  
Laminate split top table with central fabric, laminate or fabric channel. Electrics, cable management and optional task lights.



**Flexiform Jot-Up Meet**  
Height adjustable table with central power modules. Available in a range of sizes and finishes



**Library Table**  
Dining or poseur height with power, lighting or cable management. Laminate or Fenix NTM® finish and oak frame with staining.



**Centro Table**  
Solid oak legs with steel support structure and laminate top. Available in dining height and poseur height.



**Flexiform Parq Table**  
Dining or poseur height bench table with modular extensions available. Cable management & on-desk electrics available.



**Rendezvous Table**  
Dining or poseur height with optional acoustic screen, power and data plus cable management.



**Fielding Table**  
Split top dining height tables with laminate, Fenix NTM® or Younique® laminate. Power and data and lighting available.



**Agent Table**  
Solid oak or walnut dining and poseur height table with foot rail, and optional laminate table.



**BAE Table**  
Dining or poseur height with power, lighting or cable management. Laminate or Fenix NTM® finish and oak frame with staining.





#### Joy Chair Range

Upholstered seat with mesh back or upholstered/ plastic back. Arms or no arms with painted or chrome cantilever frame.



#### Flexiform Miss Chair

Upholstered chair with optional wire arms. 4 wooden leg, skid, 4 star or 5 star base. Optional two tone fabric.



#### Seren Chair Range

Full upholstered chair with arms or no arms. Painted or chrome cantilever frame. Two tone fabric.



#### Mars Chair Range

Uph. seat with mesh back or fully uph back. Arms or no arms with painted or polished 4 leg, cantilever base. Stacks 4 high.



#### Lilly Chair Range

Fully upholstered chair with chrome cantilever frame. Stacks 4 high. Arms or no arms.



#### Aaran Chair Range

Fully upholstered chair with arms or no arms. Chrome 4 leg or sled frame. Stacks 4 high. Optional quilted finish.



#### Arena Chair Range

Fully upholstered chair with square or round back. Black, silver or chrome 4 leg or cantilever frame. Arms or no arms.



#### Flexiform Equity Visitor Chair Range

Upholstered chair with upholstered, mesh or plastic back. Arms or no arms. Black or chrome 4 leg or cantilever frame.



#### Viv Chair Range

Fully upholstered chair with sled base. Painted or polished frame. No arms.

# meeting chairs



## Vite Chair Range

Upholstered seat with mesh back. Arms or no arms with chrome stacking cantilever frame. Lumbar adjustment.



## Workday Chair Range

Upholstered chair with mesh back. Self arms. Stacking cantilever frame, 4 star base or castor base.



## Mars Chair Range

Upholstered chair with arms or no arms. 4 legs, cantilever or 4 star base. Optional linking.



## Dream Chair Range

Upholstered seat with mesh back. Black, grey or polished frame. 4 leg or cantilever frame. Stacking 3 high.



## Ola Chair Range

Upholstered, wood veneer or plastic shell chair. Arms or no arms. 4 leg, skid, 4 star or 5 star base.



## Flexiform Flexi-Work Chair

Perforated back chair with upholstered seat. 4 leg, cantilever, raised polished or 5-star base. Integral arms. 7 colour choices.



## Flexiform Tonez Range

Plastic back chair with optional seat pad, 4 leg, skid or 5-star base. Pastel colours with matching frame.



## La Kendo Chair Range

Upholstered chair with mesh back. 4 legs or cantilever frame. Stacking up to 10. Arms or no arms.



## Kind Chair Range

Upholstered chair with 4 legs or cantilever frame. Black, silver or chrome frame. Stacking. Arms or no arms.





# meeting chairs



## Bjorn Chair Range

No arms, beech frame various staining options. Wooden seat or ribbed upholstery.



## Moka Chair Range

No arms, wooden shell with optional seat pad or fully upholstered. Optional staining and chassis.



## Aaron Chair Range

No arms with optional seat pad. Beech veneer with optional staining.



## Flexiform Miss Chair Range

Upholstered chair with optional wire arms. 4 wooden leg, skid, 4 star or 5 star base. Optional two tone fabric.



## Isla Chair Range

Upholstered chair with European oak or American walnut. Arm or no arms. Two tone available.



## Cubb Chair Range

Upholstered, wire arms or no arms. Oak legs with optional staining. Contrast chassis, upholstered seat with two tone option.



## Viv Chair Range

No arms. Oak or walnut base with upholstered seat.



## Agent Chair Range

Arms or no arms, walnut or oak frame with optional RAL paint. Upholstered seat with two tone option.



## Kruze Chair Range

In built arms, fully upholstered with oak or walnut base. Two tone available.



**Pinch Stool**  
Upholstered stools with glides.



**Hoot Stools**  
Fully upholstered stool with glides.



**Tandem Stool**  
Upholstered stool and bench with flat steel feet, felt pads. Benches available.



**Sully Stools**  
Upholstered sully stool on castors.  
Lockable castors.



**Ramsey Stool**  
Upholstered stool with back in contrasting finish. Lockable castors.



**Skomer Stool**  
Upholstered stool with back and arms in contrasting finish. Lockable castors.



**Pad Stool**  
Upholstered stool with glides or wooden legs. Various organic shapes.



**Bligh & Fletcher Stool**  
Cylindrical or square stool with two tone fabric option. Nylon glides.



**Mir Stool**  
Soft seating pouffe with 2 height options. Matching benches also available.

# low stools



**Carry On Stool Stools**  
Upholstered stool with adjustable wooden folding handle for easy transportation.



**Cube Stools**  
Upholstered cube stool with 4, 8 or 16 ribbed square design. Single, dual, L shape or T shape design.



**Hex Stool**  
Upholstered hexagonal stool in various heights. Glide feet.



**Box Stools**  
Upholstered stool with wooden legs or castors. Cube or cylindrical shape.



**Runna Pouffe**  
8 sided small and large pouffe with glides.



**Ballo Stools**  
Balancing stool for core strength and promoting movement. Blow up cushioned seat.



**BuzziMilk Stool**  
Solid oak stool with optional upholstered seat pad.



**Cubb Stool**  
Solid oak legs with contrasting chassis and upholstered seat pad.



**Natta Stool**  
Upholstered stool with walnut, beech, oak and maple legs.





# work stools



**Flexiform Flexi-Work Draughtsman Stool**

**Back/ Seat:** Upholstered seat and plastic back.

**Arms:** Integral arms

**Mechanism:** Height adjustable

**Frame:** 5 star black nylon base

**Foot Rest:** Height adjustable black nylon foot ring with grip surface.

**Finishes:** Choose from fabric band 0-9.



**Flexiform Melita Stool**

**Back/ Seat:** Optional upholstered seat pad and plastic back.

**Arms:** N/a

**Mechanism:** N/a

**Frame:** Chrome 4 leg frame

**Foot Rest:** Integral chrome footrest.

**Finishes:** Choose from fabric band 0-9.



**Flexiform One-Shot Stool**

**Back/ Seat:** Optional upholstered seat pad and plastic back.

**Arms:** N/a

**Mechanism:** N/a

**Frame:** Chrome 4 leg frame

**Foot Rest:** Integral chrome footrest.

**Finishes:** Choose from fabric band 0-9.



**Flexiform Miss Stool**

**Back/ Seat:** Upholstered back and seat.

**Arms:** N/a.

**Mechanism:** N/a.

**Frame:** 4 ash wood frame with staining to oak, walnut, white or black.

**Foot Rest:** Integral chrome footrest.

**Finishes:** Choose from fabric band 0-9, single, two tone 1 (back/seat) or two tone 2 (inside/outside).



**Flexiform Miss Stool**

**Back/ Seat:** Upholstered back and seat.

**Arms:** N/a.

**Mechanism:** N/a.

**Frame:** Chrome skid base frame.

**Foot Rest:** Integral chrome footrest.

**Finishes:** Choose from fabric band 0-9, single, two tone 1 (back/seat) or two tone 2 (inside/outside).



**Flexiform Jot-Up Stool**

**Back/ Seat:** Upholstered seat, no back.

**Arms:** N/a.

**Mechanism:** Height adjustable, 360 degree seat and 20 degree +/- rocking.

**Frame:** Height adjustable rocking frame with grip base.

**Foot Rest:** N/a

**Finishes:** Choose from fabric band 0-9.



A modern lounge interior featuring a grey modular sofa, two white coffee tables with wooden frames, and a wall of green acoustic panels. The ceiling has a grid of green and white panels with a large, illuminated, square-shaped light fixture. The floor is covered in a blue and grey patterned carpet. On the left, a white wall displays several framed documents or certificates.

# spaces/ social

# sofas



## Axim Armchair and Sofa Range

Upholstered sofa with polished aluminium feet, two tone fabric option, twin stitch detail and loose cushions.



## Clarence Armchair and Sofa Range

Upholstered sofa with polished aluminium feet or European oak legs. Top stitch detail.



## Cwtch Armchair and Sofa Range

Upholstered sofa with die-cast aluminium or wooden legs, two tone fabric available and reveal seam option.



## Peeps Armchair and Sofa Range

Upholstered sofa with oak frame with optional walnut, beech or black staining.



## Entente Armchair and Sofa Range

Upholstered sofa with polished aluminium feet or European oak legs, two tone fabric option and top stitch detail.



## Orten Armchair and Sofa Range

Upholstered sofa with painted, European oak or American black walnut frame in 2 leg styles. Top stitch detail.



## Coze Armchair and Sofa Range

Upholstered sofa with oak frame with optional walnut, beech, black or dark distressed oak staining.



## Gilbert Armchair and Sofa Range

Upholstered sofa with solid turned legs in beech, oak, black, white or custom RAL colour. Optional two tone fabric & buttons.



## Coco Armchair and Sofa Range

Upholstered sofa. Solid beech legs with optional oak or walnut staining, two tone fabric and button detail.





#### Hm108 Armchair and Sofa Range

Upholstered sofa with post feet, optional two tone fabric and arms.



#### Hub Armchair and Sofa Range

Upholstered sofa with silver steel legs with optional chrome finish. Two tone fabric available.



#### Leo Armchair and Sofa Range

Upholstered sofa with sprung seating and. Silver steel legs. Two tone fabric available. Armchair, 2 and 3 seater sofa available.



#### Fence Armchair and Sofa Range

Upholstered sofa with steel or wooden legs stained to walnut or natural. Two tone fabric available.



#### Theo Armchair and Sofa Range

Upholstered sofa with wooden base and optional buttoned seat and back cushions.



#### Bodie Armchair and Sofa Range

Upholstered sofa with Oak or American Black Walnut legs. Foam seat and back cushions



#### Home Armchair and Sofa Range

Upholstered sofa with metal frame detail and optional side and back screens.



#### Pullman Sofa Range

Upholstered sofa with metal or wooden legs, optional power and integrated single tablet or double tablet arms.



#### Ever Armchair and Sofa Range

Upholstered sofa with wooden or metal legs



# sofas



**Tryst Armchair and Sofa Range**  
Upholstered sofa steel frame and CMHR foam. Silver aluminium steel legs. Two tone fabric available.



**Fence Armchair and Sofa Range**  
Upholstered sofa with steel or wooden legs stained to walnut or natural. Two tone fabric available.



**Arthur Armchair and Sofa Range**  
Upholstered sofa with foam and feather lumbar cushion. Beech legs with top stitch detail and optional high back panelling.



**Coze Armchair and Sofa Range**  
Upholstered sofa with oak frame with optional walnut, beech, black or dark distressed oak staining.



**Alcove Chair and Sofa Range**  
Upholstered sofa with quilted fabric & steel legs. Two tone fabric available.



**Cloud Quilt Armchair and Sofa Range**  
Upholstered sofa with plain or quilted fabric and steel or wooden legs stained in oak or walnut. Two tone fabric available.



**Cwtch Armchair and Sofa Range**  
Upholstered sofa with die-cast aluminium or wooden legs, two tone fabric available and reveal seam option.



**Entente Armchair and Sofa Range**  
Upholstered sofa with polished aluminium feet or European oak legs, two tone fabric option and top stitch detail.



**Hush Armchair and Sofa Range**  
Upholstered sofa with wire frame or solid wooden legs. Two tone fabric available.



#### Myriad Modular Seating Range

Upholstered modular sofa with European oak, painted steel or aluminium leg options. Three tone fabric available.



#### Rhyme Modular Seating Range

Upholstered modular sofa with tall back support and RAL painted plinth. 5 modular pieces to create unique configurations.



#### Atom Modular Seating Range

Upholstered modular sofa with high back and low back configurations. Over 70 standard preconfigured seating.



#### HM83 Modular Seating Range

Upholstered modular sofa with stainless steel legs. 3-prong configuration suitable for an atrium.



#### Vale Modular Seating Range

Upholstered sofa with polished aluminium leg, two tone fabric available.



#### Horizon Modular Seating Range

Upholstered modular sofas with glides. With or without back rests. 7 modular shapes.



#### Raft Modular Seating Range

Upholstered modular sofas with legs and plinth bases, two heights available. Power and data available.



#### Us Modular Seating Range

Upholstered modular sofa with European oak legs with top stitch detail. Nylon glides. Two tone fabric available.



#### Fifteen Modular Seating Range

Upholstered modular sofa with steel glides and two tone upholstery. High and low back sofas.



# sofas



**Away from the Desk Modular Seating Range**  
Upholstered modular sofa high and low back configurations and optional integrated tables. Over 100 configurations.



**Fuse Modular Seating Range**  
Upholstered modular sofa optional button detail and various height backrests.



**HM63 Modular Seating Range**  
Upholstered modular sofas designed like pebbles. With or without backrests and integrated tables.



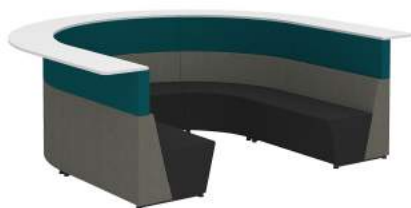
**Fjord Modular Sofa**  
Single modular armchairs with optional screens, lighting, power and tables.



**Snug Modular Sofa**  
Upholstered modular sofa with 7 units for unique combinations. Ultra-deep seats and simple pillow edge detail. Black frame.



**Hatch Modular Sofa**  
Upholstered sofa with steel legs for a simple but effective modular sofa.



**Flock Modular Sofa**  
90 degree, Banquette, L-Shape and U-Shape configurations with freestanding tables. Optional power modules.



**Fence Modular Sofa**  
High back or low back upholstered sofa with wooden or metal legs.



**Border Modular Sofa**  
High or low upholstered sofa with integral tables.





# lounge chairs



## Marnie Chair Range

Low or high back with swivel star, 4 steel legs, wooden or wire base. Fabric or leather with two tone upholstery available.



## Catifa 70 Chair Range

High back chair with 4 star polished base with return and tilt mechanisms. Metal arms available.



## Kruze Lounge Chair Range

Low or high back chair with upholstered or wooden show wood outer. Polished chrome 4 star base.



## Avi Chair Range

Low or high back with wire frame or 4 star base. Two tone fabric available. Painted, chrome or polished base.



## Aden Chair Range

High back with optional roof hood. Wire or wooden leg base. Two tone fabric available.



## Hush Chair Range

Wing high back chair or low back with wire, swivel or wooden legs. Two tone upholstery available. RAL wire legs available.



## Hygge Chair Range

Low or high back chair with wooden oak shell. 4 leg base or broomstick base.



## Flexiform Large Valido Chair Range

Large Valido chair range with single or two tone fabric. Large range of wooden and metal bases and optional headrest.



## Spirit Lounge Chair Range

Low or high back with 4 star polished aluminium, 4 star wooden base or wire base.



#### Kim Chair Range

Low back chair with swivel base in polished, black or white finish.



#### Always Lounge Chair Range

Medium back with wire, swivel or wooden legs. Two tone upholstery available. RAL wire legs available.



#### Coze Chair Range

Low or high back chair with 4 star swivel base or wooden legs. Two tone upholstery available.



#### Track Chair Range

Low back chair with painted or polished raised 4 star or flat base. Two tone upholstery available.



#### Bloom Chair Range

Low back chair with painted, polished or chrome wire or 4 star base. Optional tilt mechanism. Two tone upholstery available.



#### Leaf Chair Range

Low back with sled base available in white, green or moka. Suitable for indoor and outdoor use.



#### Wave Chair Range

Low or medium back chair with swivel aluminium or wooden base.



#### Runna Chair Range

Low or high back chair with 4 star base. Satin silver or black frame.



#### Wayvee Chair Range

Low back chair with wire base or spider legs. Four tone upholstery available.



# lounge chairs



## Mae Chair Range

Low or high back chair with 4 star swivel base or wooden legs. Two tone upholstery available.



## Flexiform Small Valido Lounge Chair

Small Valido chair range with single or two tone fabric. Large range of wooden and metal bases.



## Amelia Chair Range

High back reclined lounge chair with steel four leg, steel sled, aluminium four star and oak four star base.



## Paloma Chair Range

Armchair with steel 4 leg, steel sled, aluminium 4 star, mobile 4 star, 5 star with castors or timber 4 legs.



## Mr & Mrs

High back and mid back armchairs with button detail and wooden legs.



## Ark Range

High back chair with 4 legs stained to oak or black.



## Chelsea Chair

Lounge chair with 3 metal leg design and unique upholstery.



## Dixi Chair

Wing high back and low back chair with wooden, metal or upholstered base detail.



## Muse Chair

Cocoon style lounge chair with metal or wooden base. Optional integrated tablet.



**Flexiform Additions Coffee Table Range**  
Steel pedestal base coffee table with 25mm MFC top in a range of finishes.



**Flexiform Additions 2 Coffee Table Range**  
Low coffee table with 25mm MFC top in a range of finishes. A2 or A3 steel legs in a range of finishes. Various shape tops.



**Line Coffee Table**  
White or beech MFC top with a polished sled base.



**Elan Coffee Table Range**  
Melamine or laminate face coffee table with circular or curved square tops. Wire frame or column base.



**Flexiform Mimmo Table**  
Polished aluminium base with 25mm MFC top. Feet levellers. Available in coffee table, side table and dining table heights.



**Kruze Coffee Table Range**  
European oak or American black walnut table with white glass top as standard. Painted frame available.



**Trace Coffee Table Range**  
Painted steel frame table with clear glass or MFC top. Various shapes including circular, square and rectangular.



**120 Coffee Table Range**  
European oak table with opaque glass bronze finish top. Painted finishes available.



**Hep Coffee Table Range**  
Upholstered table with melamine top in a range of finishes. Solid wood frame.



# coffee tables



**Flexiform Wilson Coffee Table Range**  
MFC or Fenix top with hand spun solid oak legs.



**Me, Myself & I Coffee Table**  
White, oak or walnut table top with wooden legs in walnut, beech, light oak or maple Legs. One Size.



**Albany Coffee Table**  
Solid European oak or American Black Walnut table. One Size.



**Gilbert Coffee Table Range**  
Solid oak table with MDF top in white or black. Various height side tables and central coffee tables.



**Triad Coffee Table Range**  
European oak or American black walnut table with MDF dish recess top. Painted finishes available.



**Metro Coffee Table Range**  
European oak or American black walnut table with white glass top as standard. Painted frame available.



**Pause & Wait Coffee Table Range**  
European oak or American black walnut table with optional painted frame.



**Skeen Coffee Table Range**  
Solid oak table with optional walnut, beech, black or dark distressed staining. One size.



**Flexiform X-Range Table Range**  
Ash wood legs stained to oak, black, white or walnut. Coffee and side table configurations. 25mm top.

# laptop tables



**Mast Laptop Table**

Height adjustable laptop table with MDF top and painted or chrome stem. Adjustable from 610mm - 1040mm.



**Knot Laptop Table**

Fixed height laptop table with optional MFMDf, veneer or lino top with chamfered edge and RAL painted legs.



**Riley Laptop Table**

Fixed height solid oak laptop table. Finishes with a light matt lacquer.



**Icarus Laptop Table**

Fixed height laptop table with white or matt black paint. Height: 650mm.



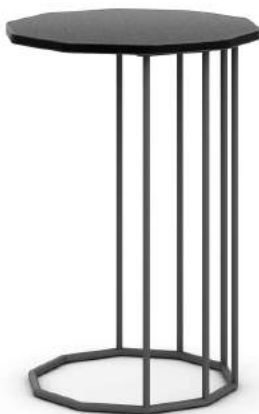
**Flamingo Laptop Table**

Height adjustable laptop table with aluminium or painted base and laminate top. Adjustable from 629mm - 1085mm.



**Ergo Laptop Table**

Height adjustable laptop table with painted or glass tops. White, silver, black or red finish. Adjustable from 625mm - 1050mm.



**Runna Laptop Table**

Laptop table with black or white MFC octagon top and black or white metal frame.



**Lock Laptop Table**

Laptop table with melamine top in 7 finishes. RAL9006 or chrome base.



**Pad Laptop Table**

Laptop table with a choice of MFC, Fenix or veneer tops with contrasting edge detail. 3 top sizes and 5 heights available.









#### Hemm Booth

Zip detailed media booth with bracket and integral table. Power and data available.



#### Coze Booth

High back booth with retro style, integrated table and monitor bracket.



#### Pullman Media Booth

High back booth with integrated table and monitor bracket.



#### Hue 2 Person Booth

Hue 2 person booth with optional high privacy screen, integral table. Raised height for informal areas.



#### Colony Booths

Hexagonal metal framework creating a central meeting space with curtain, fabric and pattern detail.



#### Room Booths

Wooden frame open meeting space with curtain, slatted, whiteboard or wood walls.



#### Grand Piano

Budget high back media booth with open or closed ends. Integral table, power and monitor arm.



#### Flexiform Encompass Booth

Meeting booths with & without integrated seating, tables, monitor arms and power and data. Square or curved design.



#### Railway Carriage Media Booth

Upholstered media booth with flat or pitched roof and ply outer panels. Integrated table with power, data and lighting available.



**Adytum Space Media Table**

Media table with central upholstered base and back panel. Dining or poseur height.



**Reef Media Table**

Wooden and steel media table with integrated table and panel. Optional power and data.



**Cocoon Media Booth**

Upholstered base and panel media booth with optional built in upholstered seating. Integrated table with power and data.



**Atom Media Booth**

Upholstered media booth with integral table. Power and data available.



**Entente Media Booth**

Upholstered media booth with wooden or steel legs and integral table. Power and data available.



**Fence Media Booth**

Upholstered media booth with wooden or steel legs and integral table. Power and data available.



**Away From the Desk Media Booth**

Upholstered media booth with integral table. Power and data available.



**Nook Pod**

Mobile booth with pitched roof, integral seating and table.



**Tryst Booth**

Booth range with integral table, cable management, monitor bracket and power. Optional roof detail.







# media pods



## Air 3 Pods

**Type:** Multi-use meeting pod.

**Finishes:** Acrylic, whiteboard, glass or upholstered panels.

**Shapes:** Circular, semi-circular, square, rectangular or curved ends.

**Power:** Service hoop.

**Fan:** Air circulation fans.

**Monitor:** Adjustable monitor arm or fixed bracket.

**Table:** Integrated tables available.

**Door:** Lockable.

**Lighting:** Integrated lighting available.

**Sensor:** N/a.



## Infinity Pods

**Type:** Multi-use meeting pod.

**Finishes:** Glass, veneer, upholstered panels, laminate.

**Shapes:** Circular, semi-circular, square, rectangular.

**Power:** Service hoop.

**Fan:** Airflow unit.

**Monitor:** Adjustable monitor arm or fixed bracket.

**Table:** N/a.

**Door:** Glass sliding door.

**Lighting:** LED lighting.

**Sensor:** Active PIR motion sensor.



## Aspect Pods

**Type:** Multi-use meeting pod.

**Finishes:** Glass or upholstered panels.

**Shapes:** Circular, semi-circular, square, rectangular.

**Power:** Service hoop.

**Fan:** N/a.

**Monitor:** N/a.

**Table:** N/a.

**Door:** Glass sliding door.

**Lighting:** Standard luminaire lighting.

**Sensor:** Active PIR motion sensor.



## Campers & Dens

**Type:** Multi-use meeting pod.

**Finishes:** Glass, upholstered and wooden panels and decoration.

**Shapes:** Square with or without canopy

**Power:** Service hoop.

**Fan:** Integrated ventilated system

**Monitor:** Optional brackets.

**Table:** Optional integral tables.

**Door:** Sliding.

**Lighting:** Integrated.



## Flexiform Encompass Pods

**Type:** Multi-use meeting pod.

**Finishes:** Acrylic or upholstered panels.

**Shapes:** Circular, square, rectangular.

**Power:** Service hoop.

**Fan:** Air circulation fans.

**Monitor:** Optional brackets.

**Table:** Optional integral table on solo and duo pods.

**Door:** Hinged door with handle.

**Lighting:** Integrated lighting.



## Mews Meeting Pods

**Type:** Multi-use meeting pod.

**Finishes:** Glazed or upholstered panels.

**Shapes:** Rectangular or square.

**Power:** Service hoop.

**Fan:** Airflow unit.

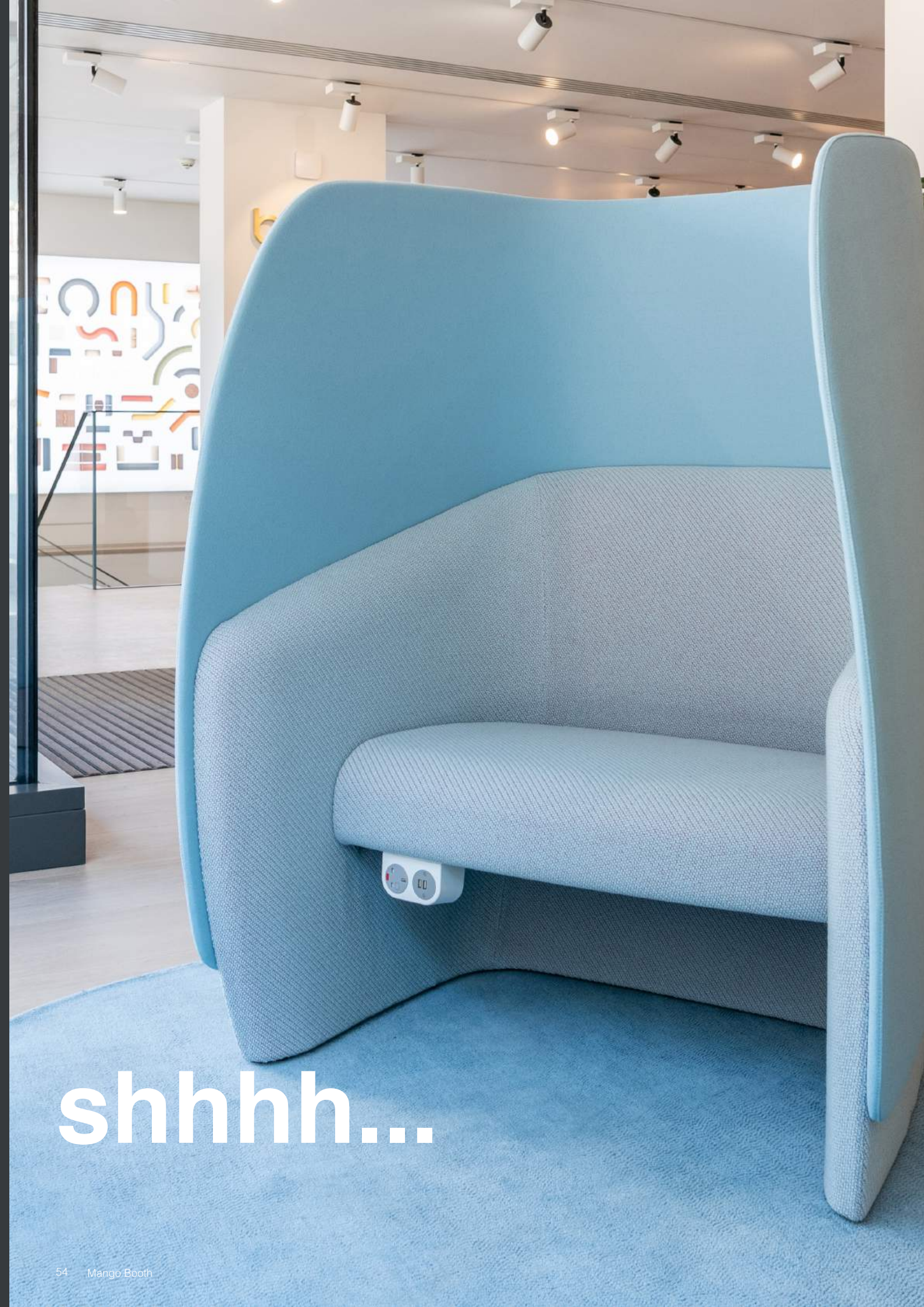
**Monitor:** Optional brackets.

**Table:** Optional integral table

**Door:** Hinged door with handle.

**Lighting:** Integrated lighting.





shhhh...

# armchairs



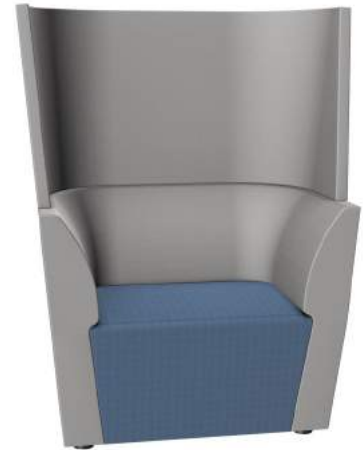
**Peek and Boo Armchairs**

Upholstered chair with high privacy screen (Peek), or without (Boo). Swivel base, suitable for use with laptop table.



**Shuffle Armchair Range**

Upholstered chair with extra high back for privacy. Suitable for collaborative work or with a laptop table.



**Away from the Desk Armchair Range**

Upholstered chair with extra high back for privacy. In built left or right handed writing tablet.



**Cega Chair**

Upholstered chair with acoustic properties and optional writing tablet.



**Busby Chair Range**

Upholstered chair with extra high back and privacy screen. Suitable for use with laptop table.



**Mango Chair Range**

Upholstered chair with left or right hand writing tablet, shelves, electrics and privacy screen.



**Fence Armchair Range**

Upholstered chair with high screen, electrics and in built writing tablet.



**Army Lite Chair Range**

Upholstered chair with 3 screen height options, electrics and in built writing tablet.



**Tryst Chair Range**

Upholstered screen with built in seats. Optional power and data, integrated work surface and overhead canopy.



# work booths



**Cubbi Booth**

Upholstered solo working booth with integrated table and power and data.



**Nautilus Booth**

Upholstered solo working booth with integrated worktop and power and data.



**Snug Booth**

Upholstered solo working booth with integrated worktop and power and data.



**Buzzi Booth**

Upholstered solo working booth with integrated worktop, roof, light LED panel and power and data.



**Atom Work Booth**

Upholstered solo working booth with integrated table. Single, double and back-to-back configurations.



**My Hive Booth**

2 person booth available in various shapes and configurations. Height adjustable or fixed integrated table.



**Flexiform Encompass Single Booth**

Upholstered solo working booth with integral table and optional power and data.



**Coppice**

Modular hexagonal solo booth with integral table.



**Flexiform Encompass Modular Booths**

Upholstered Multi-booth configuration with integral table and optional power and data.

# telephone



**Residents Work Booth/ Telephone**  
Ply acoustic single pod with integrated lighting, internal shelf and integrated perching seat.



**T4 Work Booth / Telephone Pod**  
Cladded acoustic single pod with internal fabric, floating shelf, lighting, and glass door/ panel. Power and data options.



**Framery Work Booth/ Telephone Pod**  
Acoustic single pod with glossy or matt exterior and felt interior, door, integrated table, power and data, air conditioning.



**Flexiform Encompass Telephone Booth**  
Telephone booth with integral shelf and lighting. Optional oak cladding.



**On the QT**  
Cladded telephone booth with integral shelf and armchair.



**Milli Pod**  
Single acoustic pod with adjustable LED light brightness and temperature with automatic motion detector. Integral shelf.



**Midi Pod**  
Acoustic solo pod with optional integral table. Sized to accept a task chair.



**On the QT**  
Cladded telephone booth with integral small shelf.



**Flexiform Encompass Telephone Booth**  
Telephone booth with integral shelf and lighting. Optional oak cladding.





#### Buzzi Falls Acoustic Panels

Acoustic suspended screens with leaf, floral or cityscape designs cut out in a range of fabric finishes.



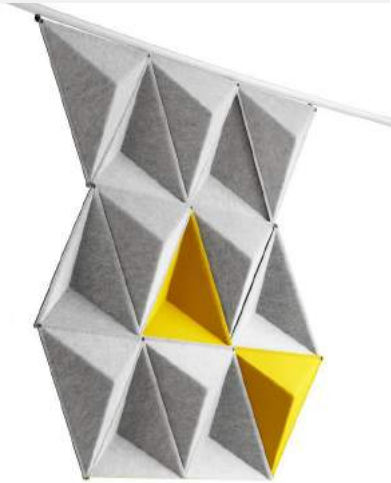
#### Airleaf Acoustic Panels

Connecting leaf shape designs with a range of finishes available.



#### Airflake Acoustic Panels

Connecting airflake shape designs with a range of finishes available. Various thickness of snowflake available.



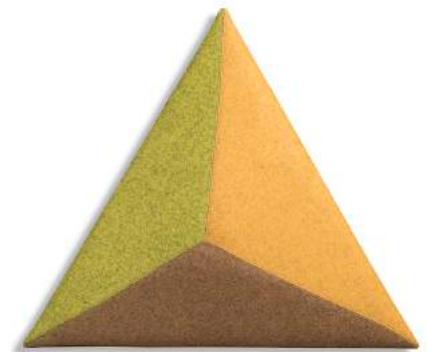
#### Aircone Acoustic Panels

Pyramid acoustic panels with a range of finishes available. Connecting design.



#### Fabricks Acoustic Wall

Upholstered chair on 4 star, cantilever or sled base. Polished frame. Optional tilting action.



#### Wall Mounted Panels

3 toned wall mounted acoustic panels in a range of depths, shapes and finishes.



#### Buzzi Pleat

Decorative pleat design with 2 design and 2 sizes. Available wall mounted or ceiling suspended.



#### Wall Mounted Panels

Wall mounted acoustic panels in a range of depths, shapes and finishes.

# acoustics



## Ceiling Baffles

Suspended ceiling baffles available in multiple sizes, finishes and shapes inc. hexagonal, rectangular and circular.



## Buzzi Grid

MFC, laminate, Fenix NTM® or veneer table with polished legs with power and data and cable management.



## Ceiling Slats

Vertical slat panels with optional horizontal adjoining panels. Available in a wide range of colours.



## Buzzi Blinds

Large slatted fabric blinds with various finishes, heights and configurations available.



## Buzzi Plant Screen

Decorative plant and cacti shape fabric panels in varying colours.



## Freestanding Screen

Large freestanding screen with optional castors. Available in a wide range of finishes and sizes.



## Alp Screens

Various shape meeting and boardroom table with MFC, veneer or PerfectSense finishes. Various metal and wood bases.



## Buzzi Screen

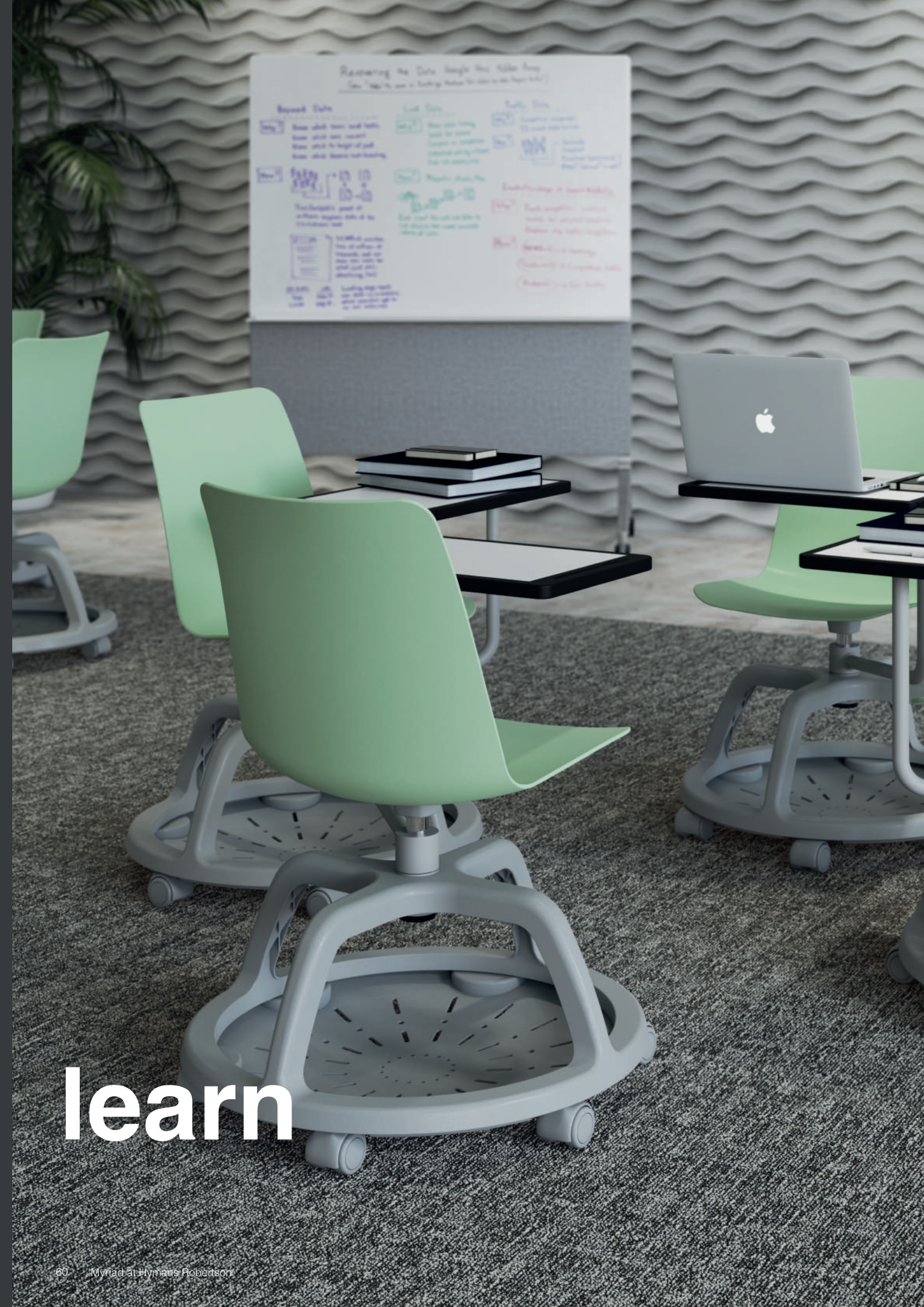
Tall zipped together screens in varying fabric finishes.



## Shaped Panels

Fabric panels shaped to create a private meeting area for use with loose furniture. Various heights and finishes available.





learn



# work chairs



**Workday Chair Range**  
Mesh back chair with castor 4 leg or 5 star base. Self arms. Various colour options. Fixed height.



**Mars Chair Range**  
Mesh back chair with castor 4 legs. Arms or no arms. Upholstered seat pad. Fixed height.



**Flexiform Miss Meeting Chair, 5 Star Base**  
Upholstered chair with 5 star castor base. Polished aluminium. Height adjustable. Optional chrome rod arms.



**Cubb Chair Range**  
Upholstered chair with 5 star castor base. Wire, upholstered arms or no arms. Height adjustable.



**Coza Chair Range**  
Plastic back and upholstered seat chair with 4 star castor base. Choice of colours. Height adjustable. Self arms.



**Olé Range**  
Plastic shell with castor base. Integral arms, optional seat pad.



**Flexiform College Chair Range**  
Plastic chair with orbital writing tablet, underneath storage and optional seat pad. Available in 6 plastic colours.



**Tonez Chair Range**  
Plastic chair with 5 star castor base. Polished aluminium finish. Optional uph. seat pad. Height adjustable.



**Flexi-Work Chair Range**  
Plastic back with upholstered seat, integral arms. Optional 12 degree tilt mechanism. Height adjustable.



# tables



**Flexiform Additions V Flip Top Table**  
Powder coated flip-top tables with MFC top, lockable castors and linking mechanisms. Rectangular top.



**Flexiform Additions Executive Flip Top Table**  
Nickel plated flip-top tables with MFC top, lockable castors and linking mechanisms. Various shape tops.



**Flexiform Additions Y Flip Top Table**  
Powder coated flip-top tables with MFC top, lockable castors and linking mechanisms. Various shape tops.



**Flexiform Additions Prestige Flip Top Table**  
Powder coated flip-top tables with MFC top, lockable castors and linking mechanisms. Various shape tops.



**Flexiform Additions Table**  
Square or round leg table with 5 top shapes. Lockable castors available for reconfiguring layouts.



**Lacrosse II Tables**  
Folding table with optional transport dolly. Available in rectangular, semi circular or trapezoidal. Powder coat or chrome legs.



**Plica Table**  
Various shape meeting and boardroom table with MFC, laminate, veneer or plywood top and chrome base.



**Tubes Table**  
Steel tube table with black base for learning spaces.



## Portal

Mobile portal unit with power and data module and TV mounting. Whiteboard reverse available.



## ThinkingWall

Dual sided mobile whiteboard with lockable castors and magnetic pen holders.



## Mood

Mobile portal whiteboard or privacy screen on castors.



## Theo

Fabric media unit with wooden supportive legs and fabric back.



## Play Mobile Media Screen

Mobile wooden media screen for collaboration space.



## Deski Chair

Mobile chair with tablet with or without a high back.



## Tier

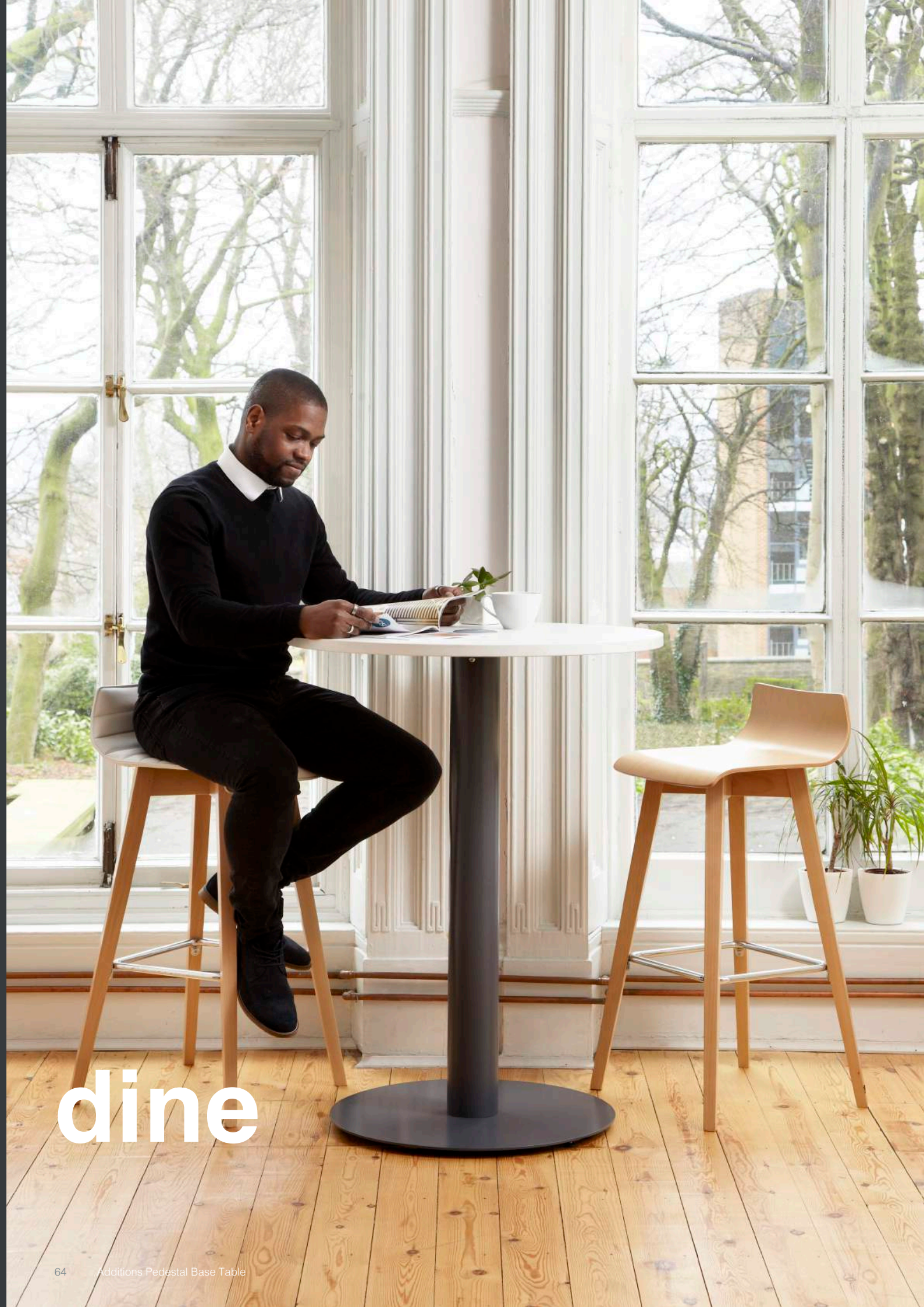
Modular stepped seating platform for learning and team spaces.



## Platform Additions

Multi-tiered seating platform for learning and team spaces.





dine

# tables



## Flexiform Additions Table

Square leg 4 table with MFC top. Simple table available in wide range of MFC and steel finishes.



## Flexiform Additions Pedestals Table

Coffee, dining and bar height pedestal base table with optional cable management or power and data.



## Flexiform Additions 2 Table

Steel or solid oak hand turned legs with MFC top or Fenix NTM® top. Available in coffee, dining and bar height.



## Flexiform Parq Table

Steel square table with MFC or 50mm laminate available with dining and bar height table with matching benches.



## Additions Tulip Base Table

720mm high chrome tulip base pedestal table with MFC table.



## Natta Table

Oak, beech, walnut, or maple table available in dining and bar height options with matching cushioned stools.



## Centro Lite Table

Solid oak frame table with laminate MFMDf top with reveer chamfered edge. Available as dining and poseur height.



## Java Table Range

Solid oak table with upholstered central panel. Available with walnut, beech, black or distressed staining.



## Agent Table Range

High table, dining, side and bistro table with optional power, data and cable management. Oak or black walnut.





#### Lloyd Chair Range

Plastic chair with natural, walnut, white or black wooden legs. 12 colour options (two tone available). Arms or no arms.



#### Deuce Chair Range

Plastic chair with oak wooden legs. 6 colour options. Stackable 4 high. Staining available.



#### Noor 6080 Chair Range

Plastic chair with natural or dark stained ash frame. Various colours plastic shells.



#### Eames Chair Range

Plastic chair with golden maple, dark maple, black maple and ash honeytone. 14 colour options. Self arms or no arms.



#### Laurel Chair Range

Plastic chair with beech wooden legs. 9 colour options.



#### Cleo Chair Range

Plastic chair with solid oak wooden legs. Black or white plastic.



#### Pollywood Chair Range

Plastic shell chair with wooden frame. Oak or walnut chair. 6 colour options. Arms or no arms.



#### Retro Chair Range

Plastic seat and back support with wooden frame. 6 colour options. No arms.



#### Ava Chair Range

Plastic chair with choice of 5 wooden legs. 6 colour options.

# dining chairs



**Flexiform Olé Wood Chair**

Wooden shell chair with distinctive holes in wenge, natural oak or white oak. Choice of 5 bases and seat pads.



**Harold Chair Range**

Wooden chair with beech veneer seat shell and solid legs in natural, walnut, black or white finish. Arms or no arms.



**Erin Chair Range**

Wooden chair with beech veneer seat shell and solid legs in natural, walnut, black or white finish. Optional uph. seat pads.



**Chalfont Chair Range**

Wooden chair with beech veneer. Arms or no arms.



**Emma Chair Range**

No arms. Oak or beech wood legs with plywood shell, optional upholstered seat and back pad. Optional staining.



**Hal Chair Range**

Wooden chair with plywood seat in oak, walnut or dark oak.



**Hartwell Chair Range**

Wooden chair with beech veneer. Arms or no arms.



**Bjorn Chair Range**

Wooden seat with no arms, beech frame various staining options.



**Moka Chair Range**

Wooden chair with beech veneer. Staining available to oak or walnut. Black or white under seat fitting. No arms.





# dining chairs



## Lloyd Chair Range

Plastic chair with 4 legs or sled frame. Painted or polished chrome frame. 12 colour options (two tone avl). Arms or no arms.



## Flexiform Tonez Chair Range

Plastic chair with 4 legs, skid or 5-star frame. 4 pastel colour shells with matching frames. Seat pad available.



## Cors Chair Range

Plastic chair with sled frame. Arms or no arms. 6 colours options. Chrome frame. Stacks 12 high, 40 on a trolley. Uph. pads.



## Flexiform One-Shot Chair Range

Stacking chair with 4 leg or skid base. Arms, no arms or tablet. Choice of 7 colours. Trolley available.



## Pimlico Chair Range

Plastic chair with 4 legs or sled frame. Arms or no arms. 5 colours options. Chrome frame. Uph. seat pads available.



## Ikon Chair Range

Plastic chair with 4 legs or cantilever frame. Arms or no arms. 6 colours options. Black, silver or chrome frame. Uph. pads available.



## Flexiform Melita Chair Range

Stacking chair with 4 leg or skid base. Arms, no arms or tablet. Choice of 7 colours. Trolley available.



## Flexiform Olé Mono Range

Plastic shell chair with distinctive holes and 5 base options. Choice of 7 colours. Seat pad available.



## Starr Chair Range

Plastic chair on sled base. Arms or no arms. 10 colour options. Linking available.





#### Kruze Stools

Chrome 4 leg frame stool with fully upholstered or upholstered/wooden shell seat. Integral footrest.



#### Loop Stools

Sled base stool with plastic shell seat and back support. Two tone plastic choices available. Integral footrest.



#### Peak Stools

Sled base stool with upholstered seat and back support. Optional arms and Integral footrest.



#### Event Stools

Chrome 4 leg frame stool with fully upholstered or plastic shell seat. Integral footrest.



#### Construct Stools

Steel frame stool with solid oak top with various RAL finishes. Integral footrest.



#### Miss Stool

Upholstered seat with wire frame and integral foot rest. Single or two tone fabric.



#### Lloyd Stool

Sled base stool with plastic shell seat and back support. Two tone plastic choices available. Integral footrest.



#### Vibe Stool

Plastic stool with chrome 4 legs. Optional upholstered seat and back pads. Integral footrest.



#### Rendezvous Stool

Sled base wire stool with upholstered top and back. Integral footrest.

# stools



## Cubb Stools

Solid wooden stool with contrasting metal chassis and footrest and upholstered seat with back support.



## On your Jays Stools

Solid wooden stool in oak with upholstered seat pad and wooden footrest.



## Bjorn Stools

Wooden stool with wooden or ribbed upholstered seat and back support. Chrome footrest.



## Agent Stools

Wooden stool with European oak or American black walnut frame, chrome footrest and upholstered seat.



## Emma Stools

Wooden stool with beech wood frame and plywood legs. Footrest and back support.



## Natta Stools

Wooden stool with ribbed upholstered seat and back support. Chrome footrest.



## Erin Stool

Wooden stool with beech veneer or upholstered seat shell and solid legs with back support and wooden footrest.



## Harold Stool

Beech veneer seat and back with solid frame with back support and steel footrest.



## Aaron Stool

Wooden stool with beech veneer with optional upholstered seat pad and solid legs with back support and wooden footrest.





#### YORKSHIRE HQ

Flexiform  
1392 Leeds Road  
Bradford  
West Yorkshire  
BD3 7AE

t: 01274 706206

#### LONDON

Flexiform  
1st Floor  
45 Gee Street  
London  
EC1V 3RS

t: 02033 010436

#### SCOTLAND

Flexiform  
2B Young Square  
Brucefield Industry Park  
Bellsquarry, Livingston  
EH54 9BX

t: 01506 416410

Please note, all images are representation only. To order a physical finish sample, please contact your local showroom on the above telephone numbers.

Company Registration Number: 02542123

**flexiform**  
[www.flexiform.co.uk](http://www.flexiform.co.uk)