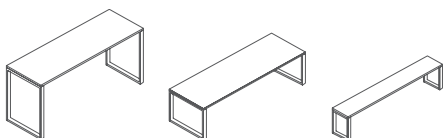




parq benches & tables datasheet

Extent of Range

Parq tables and benches are available with 25mm MFC top or 50mm laminate. Extensions with cable management available.



Delivery

This range is assembled on site by the Flexiform installation team, wrapped for protection.

Product Warranty

15 years subject to our standard T&C's. See the Flexiform Standard Warranty document for more information.

Product Certification

BS EN 15372:2016.

Features

Type: Multi-use tables for canteen and meetings.

Legs: 50mm x 50mm square section tube, laser cut for precision. Complete with adjustable feet.

Beams: 2 central beams manufactured from 50mm x 50mm square section tube with concealed fixings.

Tops: 25mm MFC or 50mm Laminate top.

Materials

MFC Top Panels: 25mm melamine faced chipboard (M.F.C) with 2mm ABS matching edging or contrasting edging. British standard 476 class 1 surface spread of flame. Meets E1 European standards on Formaldehyde emissions.

Laminate: 50mm light weight MDF with high pressure laminate face balancer and 2mm ABS edging.

Steel: Powder coated steel with minimum paint coverage thickness of 35 Microns. Indentation, cross cut+adhesion and bend tested.

Dimensions

Heights (depending upon top): 735mm/ 760mm or 1050mm/ 1075mm.

Widths: 1200mm, 1400mm, 1600mm, 1800mm, 2000mm, 2200mm or 2400mm.

Depth: 800mm.

Product Environmental Certification



Product Recyclable Content

Recycled Content: 52.78%

Recyclable Content: 99.94%

MFC Band 1 Finishes



White 25mm MFC with matching edge. Code: WHM



Grey 25mm MFC with matching edge. Code: MOG



Dust Grey 25mm MFC with matching edge. Code: DGM



Oak 25mm MFC with matching edge. Code: MOK*



Walnut 25mm MFC with matching edge. Code: MOW*



White 25mm MFC with contrasting oak edge. Code: WHO



White 25mm MFC with contrasting black edge. Code: WHB

**Please note, we cannot guarantee continuity of these finishes.*

MFC Band 2 Finishes



Cashmere Grey 25mm MFC with matching edge. Code: MSC



Antique Rose 25mm MFC with matching edge. Code: MAR



Denim Blue 25mm MFC with matching edge. Code: MDB



Reed Green 25mm MFC with matching edge. Code: MRG



Sevilla Ash 25mm MFC with matching edge. Code: MSA



Natural Nebraska Oak 25mm MFC with matching edge. Code: MNO



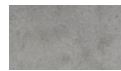
Natural Hamilton Oak 25mm MFC with matching edge. Code: MHO



Truffle Brown Denver Oak 25mm MFC with matching edge. Code: MDO



Natural Carini Walnut 25mm MFC with matching edge. Code: MCW

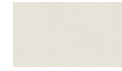


Light grey Chicago Concrete 25mm MFC with matching edge. Code: MCC

Laminate Band 1 Finishes



White 50mm Laminate with matching edge. Code: L02



Grey 50mm Laminate with matching edge. Code: L06



Dust Grey 50mm laminate with matching edge. Code: L23

Laminate Band 2 Finishes



Cashmere Grey 50mm laminate with matching edge. Code: L19



Antique Rose 50mm laminate with matching edge. Code: L20



Denim Blue 50mm laminate with matching edge. Code: L22



Reed Green 50mm laminate with matching edge. Code: L21



Sevilla Ash 50mm laminate with matching edge. Code: L14



Natural Nebraska Oak 50mm laminate (matching edge). L11



Natural Hamilton Oak 50mm laminate with matching edge. Code: L15



Truffle Brown Denver Oak 50mm laminate with matching edge. L16



Natural Carini Walnut 50mm laminate with matching edge. Code: L17



Light grey Chicago Concrete 50mm laminate with matching edge. L18

Standard Steel Finishes.



Black. RAL9005. Matt.
Code: BLM



Graphite Grey. RAL7024. Matt
Code: GGM



Silver. RAL9006. Matt
Code: JOM



Pale Grey. RAL7035. Matt
Code: PGM



White. RAL9016. Matt
Code: JWM



Pale Brown. RAL8025. Matt
Code: BPM



Grey Beige. RAL1019. Matt
Code: BGM



Beige. BS10B19. Matt
Code: BBM



Light Ivory. RAL1015. Matt
Code: BIM

Standard Steel Finishes Continued



Olive Green. RAL6003. Matt
Code: GOM



Fern Green. RAL6025. Matt
Code: GFM



Reed Green. RAL6013. Matt
Code: GRM



Black Green. RAL6012. Matt
Code: GBM



Pine Green. RAL6028. Matt
Code: GPM



Patina Green. RAL6000. Matt
Code: GAM



Pale Green. RAL6021. Matt
Code: GCM



Sapphire Blue. RAL5003. Matt
Code: USM



Violet Blue. RAL5000. Matt
Code: UVM



Distant Blue. RAL5023. Matt
Code: UDM



Pastel Blue. RAL5024. Matt
Code: UPM

Standard Steel Finishes Continued



Purple Red. RAL3004. Matt
Code: RPM



Red Violet. RAL4002. Matt
Code: RLM



Orient Red. RAL3031. Matt
Code: ROM



Beige Red. RAL3012. Matt
Code: RBM



Tomato Red. RAL3013. Matt
Code: RTM



Salmon Pink. RAL3022. Matt
Code: PSM



Yellow Red. RAL2000. Matt
Code: OYM



Broom Yellow. RAL1032. Matt
Code: YBM