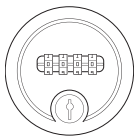




C4 Combination Locks datasheet

Extent of Range

Flexiform code: P (Black), Q (White)



Delivery

Pre-installed on the locker storage units.

Dimensions

Diameter: 60mm

Depth: 45mm, 25.6mm from locker door surface.

Finishes



Black.



White.

Features

Type: 4 digit lock.

Mode: Private Mode aka Single-user mode. Used on a locker that is assigned to an individual. Only the user of this locker will know the 4 digit code for this lock, so it cannot be used by anyone else.

Lock type: Wafer technology provides an affordable level of security.

Combinations: Up to 10,000 combinations.
Standard Material: Zamak.

Rotation: Lock rotations possible are 90° Right opening / Left closing.

Management: Master key to retrieve lost codes.

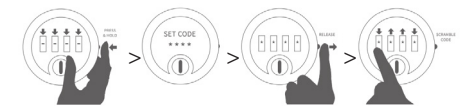
User Operating Instructions

Step 1: Press and hold side button.

Step 2: Spin the digits to your unique code.

Step 3: Release side button.

Step 4: Scramble the code.



To open, enter the code and twist the lock right.

Management Lost Code Retrieval

Step 1: Door is locked.

Step 2: Turn Master Key 90 degrees clockwise.

Step 3: Spin each number in turn downward until they stop.

Step 4: Turn Master Key 90 degrees anti-clockwise (This will reveal the last code used to lock this lock).

Step 5: Follow user operation instructions to set new code.



flexiform